

Swift Racing

Parts Catalogue

vers. 3.9 / Jan 2023

~ Making fast affordable~



Swift Racing, established in 2005 has become a leading supplier of rowing boats, accessories, boathouse equipment etc. Our current range of boats include:

- Racing Shells (RS), from 1x to 8+, built in 4 grades to suit different needs and budgets with 7 sizes of singles, 6 sizes of 2x/-, 5 sizes of 4s and 5 sizes of 8s. Our Racing Shells are proving themselves every weekend of the year at all levels of competition, from local to national to international.
- FISA's design of PARA 1x and 2x, also suitable for Recreational rowing (PR).
- Touring gigs (GI), 2x/+3x and 4x/+5x based on the German "C Gig" boat class, good for Learn To Row for beginners, Corporate or Fun Regattas, Fitness and Recreational rowing, Touring of course, right through to racing, as happens in various European countries.
- Cadet Mini 1x, Cadet 1x, Cadet 2x (CA), low cost, properly sized racing shape boats for crews of 40-60kg, especially good for very young rowers, which have properly scaled down riggers (as low as 143cm span) and oars (as short as 244cm).
- Trainer 1x75 and 1x90 (TR), built similarly to the Cadets but for rowers up to 75kg and 90kg, with 2.5cm more width than normal Racing Shells, so good for rowers who want a more stable 1x that still can go fast, or for beginner rowers, who are aiming to compete.
- Coastal boats (CO), 1x, 2x and 4x+ built to FISA regulations, the official boats chosen for the 2019 World Rowing Coastal Championships in Hong Kong.

Please use the following key to help understand the contents of this catalog:

NYA = Not Yet Available **dis** = discontinued **Incl.** = including **Excl.** = excluding
05/2007~ means "used from May 2007" **~06/2007** means "used until June 2007"

This catalog includes details of some parts which are "discontinued", so are no longer in production. Swift Distributors may have some in stock. Most of the discontinued parts have been replaced with alternative parts, such as Rigger Pins; "Rig1" has been replaced with "Rig2".

All parts are sold in units of 1 piece, except where stated otherwise.

To find your local Distributor or to get on touch with us, please visit our website at:

www.swiftracing.com

Stretchers

Sax mounted stretcher system on new RS1x moulds (12x) from Sep 1, 2022. Ideal for private 1x.



Str105 Stretcher bar (incl. 2 of Coach6x30, washers, nuts, ScrC/S4x20, locking nuts) **Material:** Aluminium **Standard:** 08/2022~

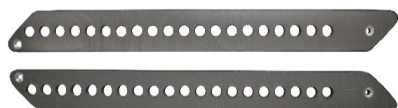
Str105-121: for mould 121-

Str105-122: for mould 122-

Str105-123: for mould 123-

Str105-124: for mould 124-

Str105-125: for mould 125-



Str106 Inner plate for sax mounted stretchers

Material: Aluminium **Standard:** 08/2022~

Str106b: bowside (starb'd)

Str106s: strokeside (port)



Str107

Outer plate for sax mounted stretchers

Material: Aluminium **Standard:** 08/2022~

Seats



Sea31-335F-14D

Seat top, low profile design - 335mm wide for double 300mm

Material: Carbon **Standard:** 12/2021~



Fin23

Rudder wire pulley

Material: Nylon **Standard:** 11/2022~



Con14

ECO stickers for reusing boxes and packaging

Material: PVC **Standard:** no

From January 2013, riggers are "hard" anodised. No pins or topstays included.

Rig20A-ha

3 stay scull rigger frame, with Euro style 12mm block - hard anodised

Material: Aluminium
Standard: 01/2013~



Rig21A-ha

3 stay sweep rigger frame, with Euro style 12mm block - hard anodised

Material: Aluminium
Standard: 01/2013~



Rig20C-ha

3 stay scull rigger frame, for L style block - hard anodised

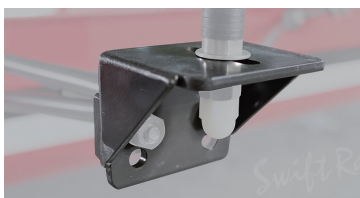
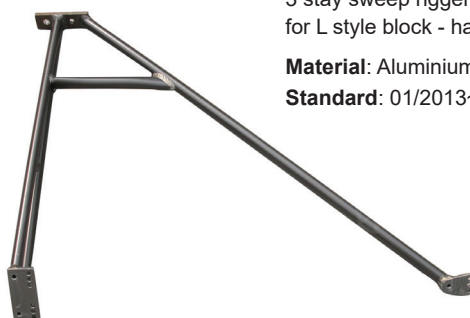
Material: Aluminium
Standard: 01/2013~



Rig21C-ha

3 stay sweep rigger frame, for L style block - hard anodised

Material: Aluminium
Standard: 01/2013~



Rig22A-ha

Non-adjustable L block for pins 1B-sc, 1B-sw, 2B-sc, 2B-sw - hard anodised

Material: Aluminium **Standard:** Yes

Rig23-ha

2 stay scull back rigger frame - hard anodised

Material: Aluminium
Standard: 01/2013~



Rig24-ha

2 stay sweep back rigger frame - hard anodised

Material: Aluminium
Standard: 01/2013~



In January 2013 a new wing rigger was introduced, with better design, using backstays for scull and sweep for maximum performance. No pins or topstays included.



Rig29-ha

Scull wing rigger - hard anodised

Material: Aluminium **Standard:** 01/2013~



Rig29A-ha

Scull wing rigger long block for adaptive boat - hard anodised

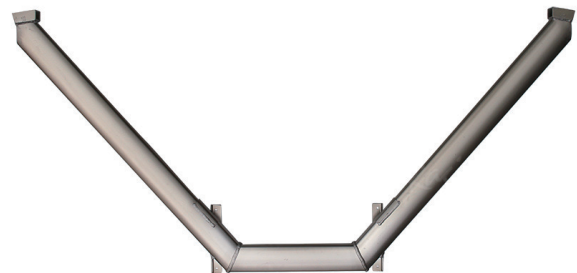
Material: Aluminium **Standard:** 01/2013~



Rig30-ha

Sweep wing rigger - hard anodised

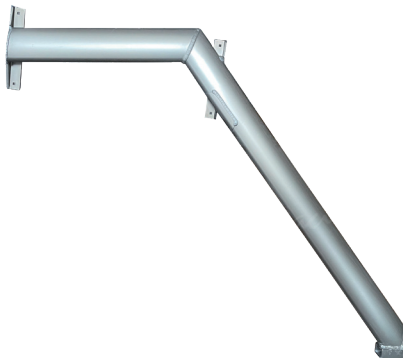
Material: Aluminium **Standard:** 01/2013~



Rig71-ha

Scull reverse wing rigger - hard anodised

Material: Aluminium **Standard:** 01/2013~



Rig78-ha

Sweep reverse wing rigger - hard anodised

Material: Aluminium **Standard:** 09/2022~

In 2017 we started offering a heavy duty scull wing rigger without backstays. No pins or topstays included.



Rig74-ha

Heavy duty scull wing rigger - hard anodised

Material: Aluminium **Standard:** 01/2017~

From Oct 2021, we start offering carbon scull wing rigger for all new mould 1s. No pins or topstays included.



Rig77A

Scull reverse wing rigger- carbon

Material: Carbon **Standard:** 10/2021~



Rig79A

Sweep reverse wing rigger - carbon

Material: Carbon **Standard:** 08/2022~

Riggers and associated parts - Pins

Rig2 pins are used on all boats since Aug 2008. They all have 13mm shafts, with 8mm thread hole in tops, and supplied complete with washers, nuts, bolts and spacers.



Rig2-sc 13x105mm shaft 8mm bolt type **Material:** Stainless

Rig2A-sc: 10x55mm base **Standard:** no

Rig2B-sc: 10x30mm base - for scull L block, **Standard:** 08/2008~

Rig2C-sc: 12x55mm base - for scull Euro & scull Ali. wing, **Standard:** 08/2008~

Rig2D-sc: 12x30mm base - **Standard:** no



Rig2-sw 3x120mm shaft 8mm bolt type **Material:** Stainless

Rig2A-sw: 10x55mm base **Standard:** no

Rig2B-sw: 10x30mm base - for sweep L block, **Standard:** 08/2008~

Rig2C-sw: 12x55mm base - for sweep Euro & sweep Ali. wing, **Standard:** 09/2008~

Rig2D-sw: 12x30mm base **Standard:** no



Rig3AL

13x110mm shaft - for ali back rigger (incl. washers, bolts and spacers)

Material: Aluminium **Standard:** 05/2014~



Rig2C-sc-TA

13x105mm shaft, 12x55mm base - 8mm bolt type - for scull (Titanium, 65g lighter than S/S, good in salt water)

Material: Titanium alloy **Standard:** no

Riggers and associated parts - Topstays/Backstays

Topstays are made up of a long pipe and an extender. The long pipe is lightweight for scull and heavyweight for sweep, with bowside (star'd) and strokeside (port). It needs to be cut to the right length by the customer.



Rig40-sc Long pipe for scull topstay

Material: Aluminium **Standard:** 03/2011~

Rig40-scb: bowside (no hose clips)

Rig40-scs: strokeside (no hose clips)

Rig40-sw Long pipe for sweep topstay

Material: Aluminium **Standard:** yes

Rig40-swb: bowside (no hose clips)

Rig40-sws: strokeside (no hose clips)

There are different extenders for different boats, but bowside and strokeside are the same. Wing rigger boats use 10.0 or 12.5. Side mount rigger boats use 18.0 or higher.



Rig41 Extender for topstay, (incl. 2 of Rig42, 1 of Rig43)

Material: Aluminium **Standard:** yes

Rig41-10.0: 10.0 degree bend

Rig41-24.1: 24.1 degree bend

Rig41-12.5: 12.5 degree bend

Rig41-30.3: 30.3 degree bend

Rig41-18.0: 18.1 degree bend

Rig41-32.4: 32.4 degree bend

Rig41-22.1: 22.1 degree bend

Rig41-34.5: 34.5 degree bend

To identify your extender, see "**Extender-mold compatibility chart**" on page 11.



Rig42

Hose Clip (for fastening topstays)

Material: Stainless **Standard:** yes



Rig43

Clamp for extender (black)

Material: Nylon **Standard:** yes

Riggers and Associated Parts - Rigger plates



Rig45A

Rigger plates for saxboards, 2x60x60mm, un-drilled

Material: Carbon **Standard:** no



Rig45B

Rigger plates for saxboards, 2x70x100mm, un-drilled

Material: Carbon **Standard:** no



Rig45C

Rigger plates for saxboards, 2x60x60mm, drilled (one hole)

Material: Carbon **Standard:** yes



Rig45D

Rigger plates for saxboards, 2x70x100mm, drilled (2 holes, at 55mm centers)

Material: Carbon **Standard:** yes

Rigger bolt washers are sold flat. They should be fitted to the rib/shoulder with a rigger bolt that is tightened. Then tap the "ears" of the washer around the rib/shoulder with a hammer.



Rig51

Rigger bolt washer (square hole) - not bent

Material: Stainless **Standard:** yes

Riggers and Associated Parts - Other



Rig9L

C bracket for Al. back rigger, incl. 1 of Rig9B, 2 of ScrHex6x20 (adjustable pitch type)

Material: Aluminium **Standard:** 05/2014~



Rig9AL

C bracket for Al. back rigger, incl. 1 of Rig9B, 2 of ScrHex6x20 (non-adjustable pitch type)

Material: Aluminium **Standard:** 05/2014~



Rig9ALb

C bracket for Al. back rigger (non-adjustable pitch type)

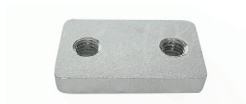
Material: Aluminium **Standard:** yes



Rig9L-NK

C bracket for Al. back rigger, used for NK Empower oarlocks (adjustable pitch type)

Material: Aluminium **Standard:** no



Rig9B

Back plate for attaching C bracket to rigger - 34x20x5mm

Material: Stainless **Standard:** yes



Rig8A "O" shape spacer for pin 2mm

Material: Nylon **Standard:** yes

Rig8A-100 "O" shape spacer for pin 2mm (pack of 100)



Rig8E "C" shape spacer for pin, 1mm

Material: Nylon **Standard:** yes

Rig8E-100 "C" shape spacer for pin, 1mm (pack of 100)



Rig8F "C" shape spacer for pin, 5mm - yellow

Material: Nylon **Standard:** 08/2022~

Rig8F-100 "C" shape spacer for pin, 5mm - yellow (pack of 100)

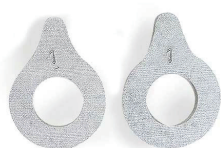


Rig8G "C" shape spacer for pin, 7mm - yellow

Material: Nylon **Standard:** 08/2022~

Rig8G-100 "C" shape spacer for pin, 7mm - yellow (pack of 100)

Pin wedges are to change the angle (pitch) of the pin. Either fore/aft, lateral, or both. 2 pieces must be used, one above and one below the rigger block (wing or Euro), inserted in opposing directions.



Rig10A-1.0

Pin wedges, 2 of 1.0 degrees

Material: Aluminium **Standard:** 09/2011~

Rigger height wedges are inserted between the saxboards and the foot of the rigger, and will increase or decrease the work height. Pin angle will also change, but pin wedges can be used to correct this.



Rig11

Rigger height wedges, 1 each of 0.5, 1.0, 1.5, 2.0, 2.5 degrees

Material: Nylon **Standard:** no



Rig12-6

6mm long inserts in sax lips, for wing rigger bolts, for all boats after Mar 2011

Material: Stainless **Standard:** yes



Rig12-10

10mm long inserts in sax lips, for wing rigger bolts, except 1x (same as Gig61)

Material: Stainless **Standard:** ~03/2011



Rig61sc

CII scull oarlock (incl. blue inserts/bushes)

Material: Nylon **Standard:** 04/2009~



Rig61sw

CII sweep oarlock (incl. blue inserts/bushes)

Material: Nylon **Standard:** 04/2009~

**Rig72**

Plug for hole in Ali wing rigger block

Material: Rubber **Standard:** 12/2014~

**Rig73**

10mm spacer for wing riggers - Round type

Material: Nylon **Standard:** 12/2014~

**Rig76**

Small plug for holes on Ali wing rigger pipes

Material: Nylon **Standard:** ~11/2022

"Gaetan" plates make it possible to temporarily attach different sized wing riggers to a boat. They are sold in pairs and include 8 screws (ScrC/S6x30), washers, spring washers and hex nuts.

**Rig75**

Gaetan wing rigger plates - pair

Material: Aluminium **Standard:** no

Frig Rig Plates replace Rig75 (Gaetan plates). They allow Swift's scull and sweep riggers to be attached to boats at points wider or narrower than the rigger by plus/minus 20, 30 and 40mm. They are sold in sets (4pcs) incl. 8 ScrC/S6x35, 4 ScrC/S6x30 with washers, spring washers and hex nuts. Check the user guide for details before ordering.

**Rig75A**

Frig rig plates - set (incl. 4 of plate, 8 of ScrC/S6x35, 4 of ScrC/S6x30 with washers, spring washers and hex nuts.

Material: Aluminium **Standard:** no

Riggers and Associated Parts - Quick Release parts for Ali wing rigger

**Rig81-QR**

Base for Quick Release system for RS, PR, Cadets & Trainers - hard anodized - 180mm

Material: Aluminium **Standard:** no

Rig95-QR

Base for Quick Release system for WR & RWR CO1x - hard anodized- 210mm

Material: Aluminium **Standard:** no

**Rig82-QR**

Cam for Quick Release system

Material: Nylon **Standard:** no

**Rig83-QR**

5mm spacer for Quick Release cam

Material: Nylon **Standard:** no**Rig84-QR**

Square shaft "bolt" for Quick Release system

Material: Stainless **Standard:** no**Rig85-QR**

2mm spacer to use Quick Release on old design wing rigger (before Jan 2013)

Material: Aluminium **Standard:** no**Rig86-QR**

Complete cam, (include Rig82-QR, Rig83-QR, Rig84-QR, ScrC/S4x20)

Material: Stainless **Standard:** no**Rig87-QR**

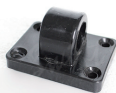
Complete Quick Release system (incl.2 of Rig81-QR, 4 of Rig86-QR, 4 of ScrC/S6x35 with washers&nuts)

Material: Aluminium **Standard:** no**Rig96-QR**

Complete Quick Release system for WR & RWR CO1x - 210mm (incl.2 of Rig95-QR, 4 of Rig86-QR, 4 of ScrC/S6x35 with lock nuts)

Material: Aluminium **Standard:** no**Riggers and Associated Parts - Coastal aluminium riggers****Rig91sc**

Floating scull rigger for CO2x & CO4x+ - hard anodised

Material: Aluminium **Standard:** ~11/2017**Rig92a**

Rigger holder for Rig91sc without screw for floating rigger

Material: Nylon **Standard:** ~11/2017**Rig92b**

Rigger holder for Rig91sc with screw for floating rigger

Material: Nylon **Standard:** ~11/2017**Rig92c**

Screw for rigger holder (Rig92b)

Material: Stainless **Standard:** ~11/2017

**Rig92d**

Support for floating rigger

Material: Nylon **Standard:** ~11/2017**Rig92e**

Black plastic knob nut for Rig92b

Material: Nylon **Standard:** ~11/2017**Rig93sc**

Folding scull rigger with L cross pipe for CO2x/- & CO4x/+ - hard anodised

Material: Aluminium **Standard:** 11/2017~**Rig93sw**

Folding sweep rigger with L cross pipe for CO2x/- & CO4x/+ - hard anodised

Material: Aluminium **Standard:** 11/2017~**Rig93a**

Rigger holder for Rig93sc&sw folding rigger - 25mm cross pipe

Material: Nylon **Standard:** 11/2017~**Rig93d**

Support with plastic clip for folding rigger (incl. 1 of ScrHex6x30, plain and spring washer, NutHex8, , WashSpr8, Rig92e, 2 of WashPla8)

Material: Nylon **Standard:** ~11/2017**Rig93f**

Rubber plug for folding rigger mount

Material: Rubber **Standard:** 12/2017~**Rig93g**

White round spacer for folding rigger

Rig93g-2: 2mm **Material:** Nylon **Standard:** ~10/2019**Rig93g-3:** 3mm **Material:** Nylon **Standard:** ~10/2021**Rig93g-5:** 5mm **Material:** Nylon **Standard:** ~10/2019**Rig99a**

Nut plate for Rig93a (CO 2x, 4x+) with rubber seal, used inside of the rigger base

Material: Nylon **Standard:** 10/2021~

**Rig94**

10mm spacer for folding riggers Rig93sc & Rig93sw, incl. 4 of ScrC/S6x45

Material: Nylon **Standard:** no

**Rig97**

5mm rubber seal with two holes for Rig94

Material: Rubber **Standard:** 04/2020~

**Rig101**

3mm thick plastic insert for CO folding riggers - black

Material: Nylon **Standard:** 10/2021~

Discontinued parts for Riggers and associated parts:

:: Aluminium riggers - anodised (until December 2012)

Prod.# / Description / Material / Standard

Rig20A-na / 3 stay scull rigger frame, with European style 12mm block - natural anodised / Aluminium / 12/2012~
Rig21A-na / 3 stay sweep rigger frame, with European style 12mm block - natural anodised / Aluminium / 12/2012~
Rig20C-na / 3 stay scull rigger frame, for L style block - natural anodised / Aluminium / 12/2012~
Rig21C-na / 3 stay sweep rigger frame, for L style block - natural anodised / Aluminium / 12/2012~
Rig22A / Non-adjustable L block for pins 1B-sc, 1B-sw, 2B-sc, 2B-sw / Aluminium / yes
Rig23-na / 2 stay scull back rigger frame - natural anodised / Aluminium / 12/2012~
Rig24-na / 2 stay sweep back rigger frame - natural anodised / Aluminium / 12/2012~
Rig29-na / Scull wing rigger - natural anodised / Aluminium / 12/2012~
Rig29A-na / Scull wing rigger long block for adaptive boat - natural anodised / Aluminium / ~08/2010
Rig30-na / Sweep wing rigger - natural anodised / Aluminium / 12/2012~

:: Pins

Rig1 pins were used on all boats up until Aug 2008. They all have 13mm shafts, with 8x27mm threaded tops, and supplied complete with washers, nuts and spacers.

Prod.# / Description / Material / Standard

Rig1A-sc / 13x105mm shaft, 10x55mm base / Stainless / ~08/2008
Rig1B-sc / 13x105mm shaft, 10x30mm base - for scull L block / Stainless / ~08/2008
Rig1C-sc / 13x105mm shaft, 12x55mm base - for scull Euro, scull & sweep Ali. wing / Stainless / ~08/2008
Rig1D-sc / 13x105mm shaft, 12x30mm base / Stainless / no
Rig1A-sw / 13x120mm shaft, 10x55mm base / Stainless / no
Rig1B-sw / 13x120mm shaft, 10x30mm base - for sweep L block / Stainless / ~08/2008
Rig1C-sw / 13x120mm shaft, 12x55mm base - for sweep Euro / Stainless / ~08/2008
Rig1D-sw / 13x120mm shaft, 12x30mm base / Stainless / no
Rig3A / 13x100mm shaft - for ali back rigger (incl. washers, bolts and spacers) / Aluminium / ~05/2014
Rig2C-sc-al / 13x105mm shaft, 12x55mm base - 8mm bolt type - for scull (lightweight aluminium version) / Aluminium / ~03/2021

:: Other

Prod.# / Description / Material / Standard

Rig9 / C bracket for Al back rigger, incl. 1 of Rig9B, 2 of ScrHex6x20 (adjustable pitch type) / Aluminium / ~05/2014
Rig9A / C bracket for Al. back rigger, incl. 1 of Rig9B, 2 of ScrHex6x20 (non-adjustable pitch type) / Aluminium / ~05/2014
Rig8B / "C" shape spacer for pin, 3.5mm / Nylon / ~02/2016
Rig8B-100 / "C" shape spacer for pin, 3.5mm (pack of 100) / Nylon1 / ~02/2016
Rig10A-0.5 / Pinwedges, 2 of 0.5 degrees / Aluminium / no
Rig33 / 10mm spacer for wing riggers / Nylon / ~04/2017
Rig34 / 2mm spacer for wing riggers (help prevent scratching) / Nylon / ~6/2020
Rig8C / "C" shape spacer for pin, 5mm - white / Nylon / ~08/2022
Rig8C-100 / "C" shape spacer for pin, 5mm - white (pack of 100) / Nylon / ~08/2022
Rig8D / "C" shape spacer for pin, 7mm - white / Nylon / ~08/2022
Rig8D-100 / "C" shape spacer for pin, 7mm - white (pack of 100) / Nylon / ~08/2022

:: Coastal riggers & associated parts - Coastal aluminium riggers

Prod.# / Description / Material / Standard

Rig93h / Nut plate for Rig93a (CO2x, 4x+), used inside of the rigger base (8shape) / Nylon / ~09/2020

Extender-mold compatibility chart

Rigger type: wing= Wing Rigger, Euro = Aliminum Euro

Rig41-10.0: 10.0 degree bend

Mould	Rigger	sc/sw
111	wing	sc
203	wing	sc, sw
401 coxless	wing	sc, sw
402 coxless	wing	sc, sw
402 bow cox	wing	sc, sw
402 stern cox	wing	sc, sw
403 coxless	wing	sc, sw
403 bow cox	wing	sc, sw
403 stern cox	wing	sc, sw
404 coxless	wing	sc, sw
405 coxless	wing	sc, sw
405 stern cox	wing	sc, sw
406 coxless	wing	sc, sw
406 bow cox	wing	sc, sw
406 stern cox	wing	sc, sw
407 coxless	wing	sc, sw
407 bow cox	wing	sc, sw
407 stern cox	wing	sc, sw
408 coxless	wing	sc, sw
408 bow cox	wing	sc, sw
408 stern cox	wing	sc, sw
409 coxless	wing	sc, sw
411 coxless	wing	sc, sw
411 bow cox	wing	sc, sw
411 stern cox	wing	sc, sw
801	wing	sc, sw
802	wing	sc, sw
805L	wing	sc, sw
805H	wing	sc, sw
806	wing	sc, sw
1PR	wing	sc
2PR	wing	sc, sw
Gig 4+	wing	sc, sw

Rig41-12.5: 12.5 degree bend

Mould	Rigger	sc/sw
101	wing	sc
102W	wing	sc
102M	wing	sc
103	wing	sc
104	wing	sc
105	wing	sc
106	wing	sc
107	wing	sc
109L	wing	sc
109H	wing	sc
201W	wing	sc, sw
201M	wing	sc, sw
202	wing	sc, sw
204	wing	sc, sw
205	wing	sc, sw
206	wing	sc, sw

208	wing	sc, sw
209	wing	sc, sw
210	wing	sc, sw
211L	wing	sc, sw
211H	wing	sc, sw
405 bow cox	wing	sc, sw
803	wing	sc, sw
807	wing	sc, sw
Gig2+long	wing	sc, sw
Gig2+short	wing	sc, sw

Rig41-18.0: 18.0 degree bend

Mould	Rigger	sc/sw
106	Euro	sc

Rig41-22.1: 22.1 degree bend

Mould	Rigger	sc/sw
101	Euro	sc
102W	Euro	sc
102M	Euro	sc
103	Euro	sc
104	Euro	sc
105	Euro	sc
107	Euro	sc
109L	Euro	sc
109H	Euro	sc
Gig2+long	Euro	sc, sw
Gig2+short	Euro	sc, sw

Rig41-24.1: 24.1 degree bend

Mould	Rigger	sc/sw
201W	Euro	sc, sw
201M	Euro	sc, sw
202	Euro	sc, sw
204	Euro	sc, sw
205	Euro	sc, sw
206	Euro	sc, sw
208	Euro	sc, sw
209	Euro	sc, sw
210	Euro	sc, sw
211L	Euro	sc, sw
211H	Euro	sc, sw
Gig 4+	Euro	sc, sw

Rig41-30.3: 30.3 degree bend

Mould	Rigger	sc/sw
203	Euro	sc, sw
402 coxless	Euro	sc
402 bow cox	Euro	sc
402 stern cox	Euro	sc

Rig41-32.4: 32.4 degree bend

Mould	Rigger	sc/sw
401 coxless	Euro	sc
402 coxless	Euro	sw
402 bow cox	Euro	sw
402 stern cox	Euro	sw
403 coxless	Euro	sc
403 bow cox	Euro	sc
403 stern cox	Euro	sc
405 coxless	Euro	sc
405 bow cox	Euro	sc
405 stern cox	Euro	sc
406 coxless	Euro	sc
406 bow cox	Euro	sc
406 stern cox	Euro	sc
408 coxless	Euro	sc
408 bow cox	Euro	sc
408 stern cox	Euro	sc
801	Euro	sc
802	Euro	sc, sw
803	Euro	sc
805L	Euro	sc, sw
805H	Euro	sc
806	Euro	sc, sw
807	Euro	sc
808	Euro	sc

Rig41-34.5: 34.5 degree bend

Mould	Rigger	sc/sw
401 coxless	Euro	sw
403 coxless	Euro	sw
403 bow cox	Euro	sw
403 stern cox	Euro	sw
405 coxless	Euro	sw
405 bow cox	Euro	sw
405 stern cox	Euro	sw
406 coxless	Euro	sw
406 bow cox	Euro	sw
406 stern cox	Euro	sw
407 coxless	Euro	sc, sw
407 bow cox	Euro	sc, sw
407 stern cox	Euro	sc, sw
408 coxless	Euro	sw
408 bow cox	Euro	sw
408 stern cox	Euro	sw
801	Euro	sw
803	Euro	sw
805H	Euro	sw
807	Euro	sw
808	Euro	sw

New design stretcher with simpler adjustment of angle. Used with shoes and flexfoot.



Str101 Stretcher Board

Material: Carbon **Standard:** 9/2015~

Str101-245: 245 x 310mm (all 1s)

Str101-260: 260 x 320mm (all 2s)

Str101-270: 270 x 310mm (all PR)

Str101-270L: 270 x 330mm (4s, 8s, Gigs)

Complete stretchers include 1 of Str101, Str102, Str103, 2 of Str6 with ScrC/S4x20, 4 of ScrC/S6x25. (T bolts, 25mm Al pipe not included)



Str101-c Stretcher Board Complete

Material: Carbon **Standard:** 9/2015~

Str101-245c: 245 x 310mm (all 1s)

Str101-260c: 260 x 320mm (all 2s)

Str101-270c: 270 x 310mm (all PR)

Str101-270cL: 270 x 330mm (4s, 8s, Gigs)



Str2

16mm pipe for base of stretcher (150mm long)

Material: Aluminium **Standard:** 9/2015~

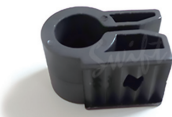


Str2a

End cap for Str2

Material: Nylon **Standard:** 9/2015~

Str 3 is used on Str1 to attach the base of the stretcher to the stretcher track



Str3

"C" type track runner for 16mm diameter pipe, shark tooth

Material: Nylon **Standard:** 9/2015~

Str 3A (2 of) holds Str2 to the back of stretcher Str1.



Str3A

"C" type track runner for 16mm diameter pipe, flat face

Material: Nylon **Standard:** 9/2015~

**Str6**

U bracket for holding 25mm aluminium pipe to stretcher

Material: Aluminium **Standard:** yes

**Str6C**

Carbon U bracket for holding 25mm carbon pipe to stretcher

Material: Carbon **Standard:** ~9/2021

**Str8**

Stretcher track, shark tooth type - 250mm

Material: Nylon **Standard:** yes

**Str9**

Stretcher track, shark tooth type - 350mm

Material: Nylon **Standard:** 09/2015~

**Str10**

Insert type runner for 25mm diameter pipe

Material: Nylon **Standard:** yes

**Str11**

Flat type track runner for keel

Material: Nylon **Standard:** no

**Str17**

25mm cross pipe, hard anodised

Material: Aluminium **Standard:** yes

Str17: 1.5m length uncut

Str17-500: 500mm length

**Str17C**

25mm cross pipe, 1.3m length uncut - carbon

Material: Carbon **Standard:** ~9/2021

**Str102**

Stretcher keel bracket for Str101

Material: Aluminium **Standard:** 9/2015~

**Str102c**

Stretcher keel bracket for Str101 - complete (incl. Str102, 103 and screws & washers)

Material: Aluminium **Standard:** 9/2015~



Str103

Nut plate for stretcher keel bracket Str102 (8 shape)

Material: Stainless **Standard:** 9/2015~



Str104

Heel wedge 5 degrees (for Str101)

Material: Nylon **Standard:** no

Stretchers and associated parts - Shoes and shoe plates

Shoe plates are attached in the center, so allow shoes to be positioned wider than usual for more comfort and better application of power. The product number indicates the width of the stretcher.
Str 31A has a rectangular hole pattern (35mm across, 25mm down) to take Swift shoes



Str31A Shoe plate for Swift shoes

Material: Aluminium **Standard:** 09/2011~

Str31A-260: for 260mm stretcher, actual width is 240mm

Str31A-270: for 270mm stretcher, actual width is 250mm

Str31B has two sets of holes, one for Swift shoes (30x25mm), and one for PBR shoes.



Str31B Shoe plate for PBR2 shoes & Swift shoes

Material: Aluminium **Standard:** 10/2018~

Str31B-245: for 245mm stretcher, actual width is 230mm

Str31B-260: for 260mm stretcher, actual width is 240mm

Str31B-270: for 270mm stretcher, actual width is 250mm

Str31C has two sets of holes, one for 260mm stretcher and one for 270mm.



Str31C-260

Shoe plate for Active Tools shoes - for 260mm and 270mm stretcher, actual width is 240mm

Material: Aluminium **Standard:** 04/2019~

Str33A is for other makes of shoe or to customize shoe splay angle.



Str33A Shoe plate with no shoe holes

Material: Aluminium **Standard:** no

Str33A-245: for 245mm stretcher, actual width is 230mm

Str33A-260: for 260mm stretcher, actual width is 240mm

Str33A-270: for 270mm stretcher, actual width is 250mm

Str62A have mesh uppers for breathability and drying. The 3 black webbing straps connect to the 3 velcro/webbing straps for good fitting and durability. They have Swift's rectangular hole pattern (35mm across, 25mm down). 5mm screws included.



Str62A

Shoes, Swift mark 3

Material: Nylon **Standard:** 09/2011~

Str62A-37: EUR37, UK4 1/4, US4 3/4, JPN22.75

Str62A-38: EUR38, UK5, US5 1/2, JPN23.5

Str62A-39: EUR39, UK5 3/4, US6 1/4, JPN24.25

Str62A-40: EUR40, UK6 1/2, US7, JPN25

Str62A-41: EUR41, UK7 1/4, US7 3/4, JPN25.75

Str62A-42: EUR42, UK8, US8 1/2, JPN26.5

Str62A-43: EUR43, UK8 3/4, US9 1/4, JPN27.25

Str62A-44: EUR44, UK9 1/2, US10, JPN28

Str62A-45: EUR45, UK10 1/4, US10 3/4, JPN28.75

Str62A-46: EUR46, UK11, US11 1/2, JPN29.5

Str62A-47: EUR47, UK11 3/4, US12 1/4, JPN30.25

Str62A-48: EUR48, UK12 1/2, US13, JPN31

Str62A-49: EUR49, UK13 1/4, US13 3/4, JPN31.75

Str62A-50: EUR50, UK14, US14 1/2, JPN32.5

Str62A-51: EUR51, UK14 3/4, US15 1/4, JPN33.25

Str62A-52: EUR52, UK15 1/2, US16, JPN34

Str62A-53: EUR53, UK16 1/4, US16 3/4, JPN34.75

Str62A-54: EUR54, UK17, US17 1/2, JPN35.5



Str64a

Heel restraint, 50cm length of 3mm Dyneema, orange

Material: Nylon **Standard:** 9/2015~



Str64b

Quick release cord for Str62A (same as Str73E)

Material: Nylon **Standard:** yes

Stretchers and associated parts - Stretcher steering parts

The steering system below was supplied with Swift boats built until Aug 2011. The shoe plate design was changed slightly from 09/2011, to take Coach6x20 & an 8mm sleeve.

The product number indicates the width of the stretcher.



Str41 Steering shoes plate

Material: Carbon **Standard:** ~08/2012

Str41-260: for Swift shoes - 260mm (incl. 2 of Str44 and 1 of Str44A)

Str41-270: for Swift shoes - 270mm (incl. 2 of Str44 and 1 of Str44A)



Str43 Steering shoes plate

Material: Carbon **Standard:** no

Str43-260: no shoe holes - 260mm (incl. 2 of Str44 and 1 of Str44A)

Str43-270: no shoe holes - 270mm (incl. 2 of Str44 and 1 of Str44A)

**Str44**

Cable guide

Material: Nylon **Standard:** ~08/2012**Str44A**

Cable guide holder (incl. ScrC/S4x12, NutLock4, WashPla4)

Material: Stainless **Standard:** : ~08/2012**Str45**

Cable (1m)

Material: Nylon **Standard:** ~08/2012**Str46B**

Steering finger for "square" shoes - complete (incl. Str47, 48, Coach6x20)

Material: Aluminium **Standard:** ~08/2012**Str46D**

Steering finger with no shoe holes - complete (incl. Str47, 48, Coach6x20)

Material: Aluminium **Standard:** no**Str49**

8mm sleeve for Str41, use with Coach6x20

Material: Stainless **Standard:** ~08/2012

From September 2012 boats are supplied with Str1-steer, without a shoe plate. The steering finger is horizontal, to give more space with wing riggers. Stretcher can be moved without adjusting rudder wire. It can be used in most makes of boats.

**Str44B**

Cable holder

Material: Nylon **Standard:** 9/2012~**Str45A40**

Cable - heavy duty 400mm (top)

Material: Nylon **Standard:** 9/2012~**Str45A65**

Cable - heavy duty 650mm (bottom)

Material: Nylon **Standard:** 9/2012~**Str46E**

Steering finger for Swift shoes - complete (incl. Str47, 48A, Coach6x25)

Material: Aluminium **Standard:** ~9/2015

**Str46F**

Steering finger with no shoe holes - complete (incl. Str47, 48A, Coach6x25)

Material: Aluminium **Standard:** no

**Str46G**

Steering finger for PBR2 shoes - complete (incl. Str47, 48A, Coach6x25)

Material: Aluminium **Standard:** 10/2018~

Str46H

Steering finger for Active tool shoes - complete (incl. Str47, 48A, Coach6x25)

Material: Aluminium **Standard:** 04/2019~

**Str50**

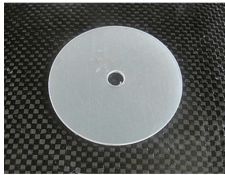
"C" type clamp to attach steering stretcher to 25mm stretcher pipe

Material: Nylon **Standard:** 09/2012~

**Str47**

Clamp - to clamp wire to finger (Incl. bolt, washer, wing nut)

Material: Nylon **Standard:** 09/2012~

**Str48A**

55mm plastic washer for under steering finger (1mm thick)

Material: Nylon **Standard:** 09/2012~

**Str48B**

3mm ali spacer for non steering shoe

Material: Aluminium **Standard:** 09/2012~

**Str48D**

3mm ali spacer for non steering shoe, with no shoe holes

Material: Aluminium **Standard:** no

**Str48G**

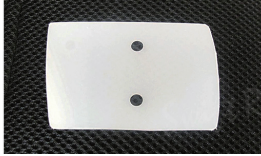
Steering finger for PBR2 shoes - complete (incl. Str47, 48A, Coach6x25)

Material: Aluminium **Standard:** 10/2018~



Str48H

Steering finger for Active tool shoes - complete (incl. Str47, 48A, Coach6x25)
Material: Aluminium **Standard:** 04/2019~



Str48C

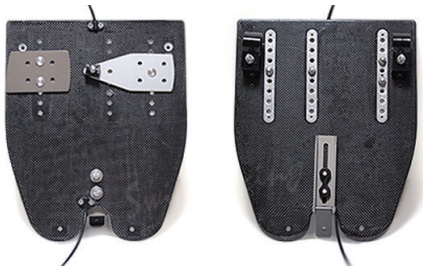
1mm plastic spacer for non steering shoe
Material: Nylon **Standard:** 09/2012~

From September 2015 boats are supplied with Str2, with simpler adjustment of angle.



Str2-steer

Steering stretcher board for Swift - 260 x 320mm
Material: Carbon **Standard:** 9/2015~

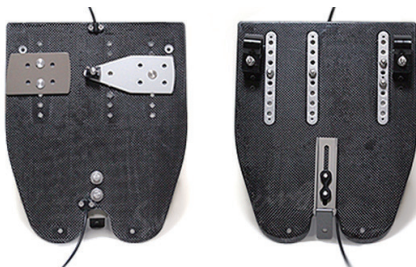


Str2-steer-c

Steering stretcher complete (incl. 2 of Str44B, 6, 1 of Str102c, 45A40, 45A65, 46E, 48B, 48C, Str51)
Material: Carbon **Standard:** 9/2015~

Str2b-steer-c

Complete steering stretcher - PBR shoes (incl. 2 of Str44B, 6, 1 of Str102c, 45A40, 45A65, 46G, 48G, 48C, Str51)
Material: Carbon **Standard:** 10/2018~



Str2c-steer-c

Complete steering stretcher - Active tools shoes (incl. 2 of Str44B, 6, 1 of Str102c, 45A40, 45A65, 46H, 48H, 48C, Str51)
Material: Carbon **Standard:** 10/2018~



Str51

Special round screw for steering stretcher - 6x20mm
Material: SS304 **Standard:** 1/2016~



Str52

Plastic spacer for filling the space between the Active Tools shoe and the steering finger.

Material: Nylon **Standard:** 10/2018~

Stretchers and associated parts - Flexfoot stretcher and parts

Swift's own "Flexfoot" has a "closed heel" for safety, and is rounded for a better fit. Approved by USRowing & GBRowing.

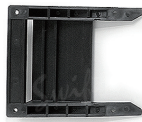


Str70A

Str70A

Flexfoot heel piece (Incl Str64a)

Material: Nylon **Standard:** 06/2008~



Str70B

Flexfoot toe piece

Material: Nylon **Standard:** 06/2008~

From June 2015, Str70Db or Ds replaces the previous strap and buckle design.



Str73

Flexfoot - complete (Incl 2 of Str70A, 70B, 1 of 73Db, 73Ds, 73E), per pair

Material: Nylon **Standard:** 06/2015~



Str73Db

Str73Ds

Str73D Flexfoot strap, velcro type

Material: Nylon **Standard:** 06/2015~

Str73Db: bowside (Starb'd)

Str73Ds: strokeside (Port)

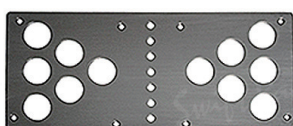


Str73E

Quick release cord for Str70D

Material: Nylon **Standard:** 06/2015~

Shoe plates are used with flexfoot from Sept 2012.



Str72

Flexfoot shoe plate

Material: Aluminium **Standard:** 09/2012~

Str72-245: 245mm, actual width is 230mm

Str72-260: 260mm, actual width is 240mm

Str72-270: 270mm, actual width is 250mm

Stretchers and associated parts - Cadet/Trainer stretchers



Str114-245

Carbon stretcher board for Cadet Mini & Cadet & Trainers (Club A) - 310x 240mm

Material: Carbon **Standard:** yes



Str114-245c

Complete carbon stretcher board for Cadet Mini 1x & Cadet 1x & Trainers (Club A) - 310x 240mm

Material: Carbon **Standard:** yes

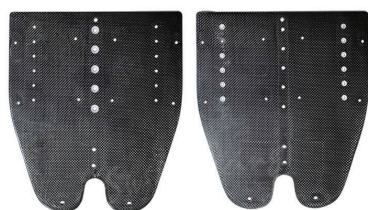
Stretchers and associated parts - Coastal stretchers



Str122a

Rubber end for CO stretcher tracks

Material: rubber **Standard:** 12/2020~



Str123-270

Stretcher board - 270x310mm

Material: Carbon **Standard:** 09/2021~



Str123-270c

Stretcher board complete- 270x310mm

Material: Carbon **Standard:** 09/2021~

Stretchers and associated parts - Coastal & Gig stretcher steering parts

The steering stretcher G18c is for use on Gigs (when used as 5x and 3x) and Coastal 1x and 2x (when rudder option is chosen).



G12

Footboard

Material: Wood **Standard:** yes

G12b: Bowside footboard
(incl. 1 of ScrC/S4x35 with locking nut and 7 of WashPla5)

G12s: Strokeside footboard (incl. screws, washers, nuts)



G13

Heel cup (incl. 1 of ScrC/S4x35 with locking nut and 7 of WashPla5, 2 of TapC/S4x10)

Material: Nylon **Standard:** yes



G14

Steering finger (incl. 2 screws)

Material: Stainless **Standard:** yes



G15

Clamp for rudder rope (incl. screws, washers, nuts)

Material: Aluminium **Standard:** yes



G16

Stopper for steering finger (6mm)

Material: Stainless **Standard:** yes



G17

Guide for steering finger (incl. 2 of ScrC/S4x15, plain washers, locking nuts)

Material: Stainless **Standard:** yes



G18

Stretcher board - 270 x 310mm

Material: Wood **Standard:** 04/2016~



G18c

Stretcher board complete - includes G12, G12b & s, G14 to G17, Str73Db, Str73Ds, Str73E, Str102c, 2 of G13

Material: Wood **Standard:** 04/2016~

Discontinued parts for stretcher and parts

:: Racing Shells & general use

Prod.# / Description / Material / Standard

Str1-245 / Stretcher board - 245 x 290mm (101, 102, 104, 105, 109), (107 since June 2011) / Carbon / ~9/2015
Str1-245L / Stretcher board - 245 x 320mm (103, 108), (107 until June 2011) / Carbon / ~9/2015
Str1-260 / Stretcher board - steering - 260 x 290mm (all 2s) / Carbon / ~9/2015
Str1-260L / Stretcher board - 260 x 325mm (for 106) / Carbon / ~9/2015
Str1-270 / Stretcher board - steering - 270 x 300mm (PARA, gigs, 401, 402, 404, 406), (8s until Dec 2011) / Carbon / ~9/2015
Str1-270L / Stretcher board - steering - 270 x 320mm (403, 405, 407), (8s since Dec 2011) / Carbon / ~9/2015
Str1-245c / Stretcher board complete - 245 x 290mm (101, 102, 104, 105, 109), (107 since June 2011) / Carbon / ~9/2015
Str1-245cL / Stretcher board complete - 245 x 320mm (103, 108), (107 until June 2011) / Carbon / ~9/2015
Str1-260c / Stretcher board complete - steering - 260 x 290mm (all 2s) / Carbon / ~9/2015
Str1-260cL / Stretcher board complete - 260 x 325mm (for 106) / Carbon / ~9/2015
Str1-270c / Stretcher board complete - steering - 270 x 300mm (PARA, gigs, 401, 402, 404, 406), (8s until Dec 2011) / Carbon / ~9/2015
Str1-270cL / Stretcher board complete - steering - 270 x 320mm (403, 405, 407), (8s since Dec 2011) / Carbon / ~9/2015

:: Stretcher parts

Prod.# / Description / Material / Standard

Str12/"C" type track runner for 25mm diameter pipe / Nylon / no
Str5 / 6 x 60mm elongated washer for stretcher Str1 (incl. TapC/S3x7) / Stainless / ~9/2015

:: Shoes and shoe plates

Prod.# / Description / Material / Standard

Str64 / Heel restraint, 50cm length of 3mm Dyneema, grey / Nylon / ~09/2015
Str31A-245 / Shoe plate for Swift shoes - for 245mm stretcher, actual width is 230mm / Aluminium / 09/2011~

:: Stretcher steering parts

Prod.# / Description / Material / Standard

Str48 / Large washer for under steering finger (2mm thick) / Nylon / ~08/2012
Str1-steer / Steering stretcher board - 260x310mm / Carbon / ~09/2015
Str1-steer-c / Complete steering stretcher - Swift shoes (incl. 2 of Str44B, 50, 1 of 45A40, 45A65, 46E, 48B, 48C) / Carbon / ~09/2015

:: Flexfoot stretcher and partss

Prod.# / Description / Material / Standard

Str70 / Flexfoot - complete (incl Str70A, 70B, 70C) per piece / Nylon / ~06/2015
Str70C / Flexfoot strap with buckle / Nylon / ~06/2015

Str71 was used on boats built between 06/2008 and 08/2012.

Str71-245 / Flexfoot stretcher board - 245 x 290mm / Carbon / ~08/2012
Str71-245L / Flexfoot stretcher board - 245 x 320mm / Carbon / ~08/2012
Str71-260 / Flexfoot stretcher board - 260 x 290mm / Carbon / ~08/2012
Str71-260L / Flexfoot stretcher board - 260 x 325mm / Carbon / ~08/2012
Str71-270 / Flexfoot stretcher board - 270 x 300mm / Carbon / ~08/2012
Str71-270L / Flexfoot stretcher board - 270 x 320mm / Carbon / ~08/2012

Str71c was used on boats built between 06/2008 and 08/2012.

Str71-245c / Flexfoot stretcher board, complete - 245 x 290mm (incl Str71, 2 of Str70) / Carbon / ~08/2012
Str71-245Lc / Flexfoot stretcher board, complete - 245 x 320mm (incl Str71, 2 of Str70) / Carbon / ~08/2012
Str71-260c / Flexfoot stretcher board, complete - 260 x 290mm (incl Str71, 2 of Str70) / Carbon / ~08/2012
Str71-260Lc / Flexfoot stretcher board, complete - 260 x 325mm (incl Str71, 2 of Str70) / Carbon / ~08/2012
Str71-270c / Flexfoot stretcher board, complete - 270 x 300mm (incl Str71, 2 of Str70) / Carbon / ~08/2012
Str71-270Lc / Flexfoot stretcher board, complete - 270 x 320mm (incl Str71, 2 of Str70) / Carbon / ~08/2012

:: Cadet/Trainer stretchers&associated parts

Prod.# / Description / Material / Standard

Str111-245 / Fiberglass stretcher board for Cadet Mini&Cadet(ClubB)-310x245mm/Fiberglass~05/2016
Str111-245c / Complete Fiberglass stretcher board for Cadet Mini 1x & Cadet 1x(Club B)-310x245mm / Fiberglass/~05/2016
Str113-245 / Fiberglass stretcher board for Cadet Mini & Cadet & Trainers(ClubB)-310x240mm/ Fiberglass / yes
Str113-245c / Complete fiberglass stretcher board for Cadet Mini 1x & Cadet 1x & Trainers(Club B)-310x240mm / Fiberglass / yes

:: Gig stretchers & associated parts - Gig stretchers & associated parts

The steering stretcher G18c is for use on Gigs (we used as 5x and 3x) and Coastal 1x and 2x (when rudder option is chosen)

Prod.# / Description / Material / Standard

G11 / Stretcher board - 270x310mm / Wood / ~04/2016
G11c / Stretcher board complete - includes G11, G12b&s, G14 to G17, Str70Db, Str70Ds, Str70E, 2 of G13 / Wood / ~04/2016

Seats and associated parts - Seats tops

Sea13 is the old flat bottom type, we stop to use use them on the racing shell as standard from October 2018.

Sea13-F Seat top, flat botttom type

Material: Carbon **Standard:** yes

Sea13-265F: 265mm wide for double and single 160, 170, 180mm

Standard: ~10/2018

Sea13-280F: 280mm wide for double and single 200, 210, 230mm

Sea13-300F: 300mm wide for double and single 250, 254,260, 280mm **Standard:** ~10/2018

Sea13-335F: (almost) flat botttom type - 325mm wide for double and single 300mm

Standard: 09/2012~



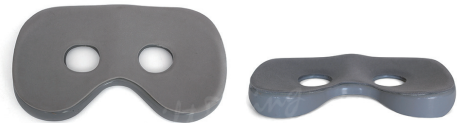
Sea13-P Plastic Seat top, flat botttom type

Material: Nylon

Sea13-280P: 280mm wide (Club B Cadet and Trainer) **Standard:** yes

Sea13-335P: 335mm wide for double and single 300mm (Club B Gigs)

Standard: 04/2016~



Sea41

Seat pad

Sea41-280: thin - for Sea13-280P **Material:** Rubber **Standard:** yes

Sea41-335: thin - for Sea13-335P **Material:** Rubber **Standard:** 04/2016~



There are 2 types of seat top Sea31-310F & 335F, one with holes 12cm apart and the other 14cm, from center to center. We start to use the 14cm type on racing shells as **Standard** from October 2018

Sea31 Seat top, low profile design

Material: Carbon

Sea31-310F-12: 310mm wide for 180, 210, 230mm seats **Standard:** no

Sea31-335F-12: 335mm wide for single 260, 280, 300mm **Standard:** no

Sea31-310F-14: 310mm wide for single 180, 210, 230mm **Standard:** Oct' 18

Sea31-335F-14: 335mm wide for single 260, 280, 300mm **Standard:** Oct' 18



Seats and associated parts - Single action seats

Sea1 is the complete single actions seat with flat bottom type seat top (Sea13) and nylon seat supports (Sea11B).

Sea1-F Single action seat, complete

Material: Carbon

Sea1-165F: 165mm **Standard:** no

Sea1-180F: 180mm **Standard:** 08/2008~

Sea1-210F: 210mm **Standard:** 08/2008~

Sea1-230F: 230mm **Standard:** 08/2008~

Sea1-250F: 250mm **Standard:** 01/2013~

Sea1-260F: 260mm **Standard:** 08/2008~

Sea1-280F: 280mm (11 inch) **Standard:** 08/2008~

Sea1-300F: 300mm **Standard:** 08/2008~



Sea1-P Plastic single action seat, complete

Material: Nylon

Sea1-210P: 210mm (Club B Cadet and Trainer) **Standard:** yes

Sea1-300P: 300mm(Club B Gigs) **Standard:** 04/2016~



Sea32 is the complete single action seat with low profile design seat top (Sea31) and nylon seat supports (Sea11B).

Sea32 Single action seat with nylon support, low profile design

Material: Carbon **Standard:** no

Sea32-180F-12: 180mm

Sea32-210F-12: 210mm

Sea32-230F-12: 230mm

Sea32-260F-12: 260mm

Sea32-280F-12: 280mm

Sea32-300F-12: 300mm

Material: Carbon **Standard:** Oct' 18

Sea32-180F-14: 180mm

Sea32-210F-14: 210mm

Sea32-230F-14: 230mm

Sea32-260F-14: 260mm

Sea32-280F-14: 280mm

Sea32-300F-14: 300mm



Sea2 is the complete single action seat with flat bottom type seat top (Sea13) and ali adjustable seat supports (Sea11C). Sea33 is the complete single action seat with low profile design seat top (Sea31) and ali adjustable seat supports (Sea11C)



Sea2-c Single action seat with aluminium adjustable support, flat bottom type

Material: Carbon **Standard:** 03/2021~

Sea2-210c: 210mm (Club A Cadet and Trainer)

Sea2-300Pc: 300mm (Elite & Club A Gigs) (Club B Coastal)



Sea33-12c

Single action seat with aluminium adjustable support, low profile design, holes 12cm apart - complete

Material: Carbon **Standard:** no

- Sea33-180F-12c:** 180mm
- Sea33-210F-12c:** 210mm
- Sea33-230F-12c:** 230mm
- Sea33-260F-12c:** 260mm
- Sea33-280F-12c:** 280mm
- Sea33-300F-12c:** 300mm

Sea33-14c

Single action seat with aluminium adjustable support, low profile design, holes 14cm apart - complete

Material: Carbon **Standard:** 03/2021~

- Sea33-180F-14c:** 180mm
- Sea33-210F-14c:** 210mm
- Sea33-230F-14c:** 230mm
- Sea33-260F-14c:** 260mm
- Sea33-280F-14c:** 280mm
- Sea33-300F-14c:** 300mm



Sea33-Pc

Plastic single action seat with aluminium adjustable support - complete

Material: Nylon **Standard:** 03/2021~

- Sea33-210Pc:** 210mm (Club B Cadet and Trainer)
- Sea33-300Pc:** 300mm (Club B Gigs)

Seats and associated parts - Single action seat parts

Sea10

Axel for seat

Material: Aluminium **Standard:** yes

- Sea10-165:** for 165mm seat **Standard:** no
- Sea10-180:** for 180mm seat **Sea10-210:** for 210mm seat
- Sea10-230:** for 230mm seat
- Sea10-250:** for 250mm seat (use washers to make 254mm - 10 inch seat)
- Sea10-260:** for 260mm seat
- Sea10-280:** for 280mm seat (11 inch)
- Sea10-300:** for 300mm seat



Sea11A

Support for single action seats - high

Material: Nylon **Standard:** no



Sea11B

Support for single action seats - **Standard**

Material: Nylon **Standard:** yes



Sea12

Ball bearing wheel

Material: Nylon **Standard:** yes



Sea11C

Aluminium support for single action seats - adjustable

Material: Aluminium **Standard:** 03/2021~

Sea20a is a simple spacer between the seat top and seat chassis.



Sea20a

10mm spacer for adjusting seat height

Material: Nylon **Standard:** 08/2008~

Sea21 fits between the seat top and chassis, for improved comfort and performance.



Sea21

2 degree wedge for adjusting seat top angle (per pair)

Material: Nylon **Standard:** no

Seats and associated parts - Double action seats and parts

SeaD1 is the complete single actions seat with flat bottom type seat top (Sea13).



SeaD1

Double action seat, flat bottom type, complete

Material: Carbon **Standard:** 09/2012~

SeaD1-180F: 180mm

SeaD1-210F: 210mm

SeaD1-230F: 230mm

SeaD1-260F: 260mm

SeaD1-280F: 280mm

SeaD1-300F: 300mm (used as **Standard** on Coastal boats)



SeaD1-300P

Plastic double action seat, complete - 300mm (used as **Standard** on Club B Coastal boats)

Material: Carbon **Standard:** 04/2016~



SeaD2

Wheel

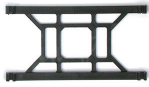
Material: Nylon **Standard:** 09/2012~



SeaD3

Stopper for positioning carriage axle

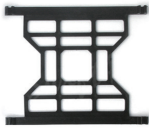
Material: Nylon **Standard:** 09/2012~



SeaD4S

93mm carriage 1 piece for 180, 210mm, 2 pieces for 280, 300mm

Material: Nylon **Standard:** 09/2012~



SeaD4L

148mm carriage 1 piece for 230, 260mm

Material: Nylon **Standard:** 09/2012~



SeaD5

Support for double action seats

Material: Nylon **Standard:** 09/2012~



SeaD6-c

Axle complete for double action seat

Material: Stainless **Standard:** 09/2012~

SeaD6-180c: 180mm include 2 of SeaD2, 2 of SeaD3

SeaD6-210c: 210mm include 2 of SeaD2, 2 of SeaD3

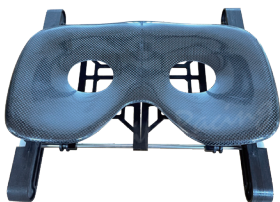
SeaD6-230c: 230mm include 2 of SeaD2, 2 of SeaD3

SeaD6-260c: 260mm include 2 of SeaD2, 2 of SeaD3

SeaD6-280c: 280mm include 2 of SeaD2, 2 of SeaD3

SeaD6-300c: 300mm include 2 of SeaD2, 2 of SeaD3

SeaD7 is the complete single actions seat with low profile design seat top (Sea31).



SeaD7-F

Double action seat, low profile design, complete

Material: Carbon **Standard:** 10/2018~

SeaD7-180F: Double action seat, low profile design, complete - 180mm

SeaD7-210F: Double action seat, low profile design, complete - 210mm

SeaD7-230F: Double action seat, low profile design, complete - 230mm

SeaD7-260F: Double action seat, low profile design, complete - 260mm

SeaD7-280F: Double action seat, low profile design, complete - 280mm

SeaD7-300F: Double action seat, low profile design, complete - 300mm

Seats and associated parts - Seat deck parts



Sea14

Seat rail, HARD anodised

Material: Aluminium **Standard:** yes

Sea14-750: 750mm (Cadet1x & Cadet Mini1x) **Standard:** 10/2013~

Sea14-820: 820mm

Sea14-850: 850mm

Sea14-880: 880mm



Sea14A

Black rail stopper

Material: Nylon **Standard:** yes

Sea14Afb: front bowside/ back strokeside

Sea14Afs: front strokeside/ back bowside

Sea17 used on 2s, 4s, 8s built before Mar 2011, use with 35mm and 45mm T bolts.



Sea17

Seat rail wedge - 2 part type

Material: Nylon **Standard:** ~03/2011



Sea22

Insert in seat deck for rail bolt hole (5mm)

Material: Nylon **Standard:** yes



Sea23

Bungee for seat

Material: Rubber **Standard:** 12/2008~

Sea23-260: for seat 140mm - 180mm, length is 260mm

Sea23-300: for seat 210mm - 230mm, length is 300mm

Sea23-350: for seat 260mm - 300mm, length is 350mm

Discontinued parts for Seats

:: Seats tops

Prod.# / Description / Material / Standard

Sea13-325F / Seat top, (almost) flat bottom type - 325mm wide for 300mm / Carbon / ~09/2012

:: Single action seats and parts

Prod.# / Description / Material / Standard

Sea1-254F / Single action seat, complete - 254mm (10 inch) / Carbon / ?

Sea10-254 / Axle for 254mm seat (10 inch) / Aluminium / no

:: Seat deck parts

Prod.# / Description / Material / Standard

Sea15 / Seat rail wedge, painted black / Wood / ~06/2008

Sea18 / Seat rail spacer-2mm,white / Nylon / 03/2011~

Shaft length is shown in the Prod.#, and may be different for wing rigger boats (W), and traditional rigger boats (T). Large rudders can be useful for river rowing. Rudders include washers and nuts.

Fin1 was used on all boats built up to March 2009. The rudder yoke is above the canvas deck.



Fin1-S

Std rudder

Material: Stainless **Standard:** ~03/2009

Fin1-200S: for Freedom 2x

Fin1-240S: for moulds # 201(W & T), 203(W & T), 204(W & T)

Fin1-255S: for moulds # 202(W & T), 401(W & T)

Fin1-285S: for moulds # 402W, 403W, 802W

Fin1-305S: for moulds # 402T, 403T, 802T

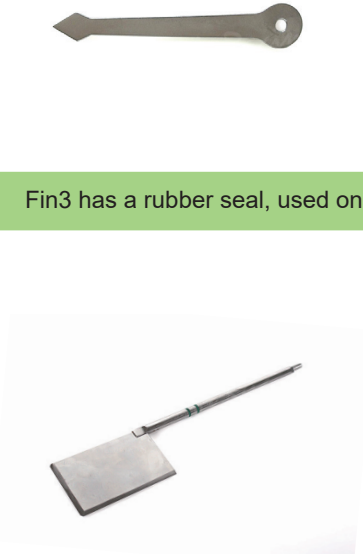
Fin1-350S: for moulds # 801T



Fin4A

Rudder yoke - hook design

Material: Aluminium **Standard:** 10/2015~



Fin5

Direction pointer

Material: Stainless **Standard:** ~6/2008

Fin3 has a rubber seal, used on boats from October 2015. Large rudders can be useful for river rowing.



Fin3-S

Std rudder (Fin3)

Material: Stainless **Standard:** 10/2015~

Fin3-145S: for freedom 2AR, AR202, PR202, PR203

Fin3-155S: for all 2s except 2AR, AR202, PR202, PR203

Fin3-200S: for all 4s, 802, 806, 807

Fin3-230S: for 803, 805



Fin3-L

Large rudder

Material: Stainless **Standard:** 10/2015~

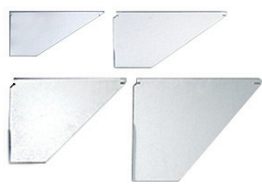
Fin3-145L: for freedom 2AR, AR202, PR202

Fin3-155L: for all 2s except 2AR, AR202, PR202

Fin3-200L: for all 4s, 802, 806, 807

Fin3-230L: for 803, 805

Fins, Rudders and associated parts - Fins



Fin10

Fin

Material: Aluminium **Standard:** yes

Fin10-1: for 1x, replaceable type

Fin10-2: for 2x/-/+, replaceable type

Fin10-4: for 4x/-/+, replaceable type

Fin10-8: for 8+, replaceable type



Fin10D

Fin box for replaceable fin (replaces previous fin box - Fin10C)

Material: Nylon **Standard:** 06/2021~

Fins, Rudders and associated parts - Other



Fin21

2mm pipe for guide holes in ribs

Material: Stainless **Standard:** yes



Fin22A

Rudder wire

Material: Stainless **Standard:** yes

Fin22A: (per 1m)

Fin22A100: (per 100m)

Fin22A500: (per 500m)

Fin22A1250: (per 1,250m)



Fin22B

Rudder line – dyneema

Material: Stainless **Standard:** yes

Fin22B: (per 1m)

Fin22B100: (per 100m)

Fin22B500: (per 500m)

Fin22B1000: (per 1,000m)



Fin23

Rudder wire guide wheel (pulley)

Material: Aluminium **Standard:** yes



Fin24

Wire fastener (2 screw type)

Material: Stainless **Standard:** yes



Fin25A

Insert in bow canvas deck for rudder lever Fin25 (same as G7)

Material: Nylon **Standard:** yes



Fin25B

Rudder lever for top cox boats (incl washers, bolts and nuts)

Material: Aluminium **Standard:** 03/2014~



Fin27

Wooden "toggle" for stern cox, with 3mm hole for rudder wire

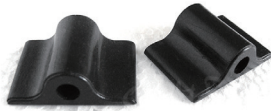
Material: Wood **Standard:** 04/2008~



Fin28

Stopper for rudder wire/wooden toggle

Material: Stainless **Standard:** 04/2008~



Fin32a

Guide for rudder wire

Material: Nylon **Standard:** ~02/2018



Fin32b

Guide for rudder wire

Material: Nylon **Standard:** 02/2018~

Fins, Rudders and associated parts - Cox parts



Fin29A

Headrest for bow cox boats (Incl. 2 U brackets and screws)

Material: Nylon **Standard:** 03/2020~



Fin30

25mm ali pipe (Incl 2 of plastic inserts Str10) for headrest - 450mm long

Material: Aluminium **Standard:** yes



Fin33A

545x370mm cushion for bow coxed 402, 406, 408, 407

Material: Rubber **Standard:** 03/2016~

Fin33B

540x350mm cushion for bow coxed 403, 410, 411

Material: Rubber **Standard:** 03/2016~

Fin34A

Cover for Fin33A

Material: PVC **Standard:** 03/2016~

Fin34B

Cover for Fin33B

Material: PVC **Standard:** 11/2020~~



Fin40-lcL
Smart track retractable rudder, small (420mm deep) - complete
Material: Nylon **Standard:** yes



Fin41-lcL
Smart track retractable rudder, small (340mm deep) - complete
Material: Nylon **Standard:** yes



Fin41A
Guide for rudder rope on CO1x, 2x
Material: Aluminium **Standard:** ~10/2020
Fin41A1a: CO101-
Fin41A2a: CO201-
Fin41A2b: CO202-



Fin41B
Rudder post for Smart Track Rudder (Fin41-lcL)
Material: Aluminium **Standard:** 10/2020~
Fin41B1a: CO102-
Fin41B1b: CO103-
Fin41B2a: CO202A
Fin41B4a: CO402+



Fin42
Guide for rudder rope (same as Str44B)
Material: Nylon **Standard:** yes



Fin43A
Rudder for CO4x/+ - 290mm shaft (incl. 3 of WashPla8, NutLock8 & Dome8)
Material: Fiberglass **Standard:** ~01/2020



Fin44A
Frame for CO4x/+ rudder Fin43A - 290mm shaft, black colour
Material: Fiberglass **Standard:** ~01/2020



Fin47a
Rudder yoke for CO4x/+ (incl. 2 of ScrFlange6x25, WashPla6W & NutLock6)
Material: Aluminium **Standard:** 04/2017~



Fin48a

Connect piece for CO4x/+ rudder yoke and rudder levers - L shape

Material: Aluminium **Standard:** 04/2017~



Fin49a

Rudder lever for CO4x/+, with black plastic cap (incl. 1 of ScrPan6x30, NutLock6, 3 of WashPla6W)

Material: Aluminium **Standard:** 04/2017~



Fin43A-c

Complete rudder for CO4x+ - 290mm shaft (incl. 1 of Fin43A, 44A, 47a, 2 of 48a & 49a)

Material: Fiberglass **Standard:** ~01/2020



Fin45

Plastic hook for CO4x/+ rudder

Material: Nylon **Standard:** 04/2017~



Fin46

Bungee 6mm, for hold CO4x/+ rudder (1m)

Material: Rubber **Standard:** 04/2017~



Fin43B

Rudder for CO4x/+ - 305mm shaft (incl. 1 of WashPla8, NutLock8 & Dome8)

Material: Fiberglass **Standard:** ~03/2020



Fin50B

Frame for CO4x/+ rudder Fin43B & 43C- 305mm shaft, black colour

Material: Fiberglass **Standard:** 01/2020~



Fin43B-c

Complete rudder for CO4x+ - 305mm shaft (incl. 1 of Fin43B, 50B, 47a, 2 of 48a & 49a)

Material: Fiberglass **Standard:** ~03/2020



Fin43C

Rudder for CO4x/+ - 305mm shaft (incl. 1 of WashPla8, NutLock8 & Dome8)

Material: Carbon **Standard:** 03/2020~



Fin43C-c

Complete rudder for CO4x+ - 305mm shaft (incl. 1 of Fin43C, 50B, 47a, 2 of 48a & 49a)

Material: Carbon **Standard:** 03/2020~

Fins, Rudders and associated parts - Coastal fins



Fin51

Fin

Material: PVC & Fiberglass **Standard:** ~06/2017

Fin51-1: for 1x

Fin51-2: for 2x

Fin51-3: for 4x+

Fin57

Carbon beach sprint fin for CO1x & Co2x/-.80mm deep

Material: Carbon **Standard:** 11/2019~



Fin55S

Carbon fin for CO1x and CO2x, 160mm deep

Material: Carbon **Standard:** 11/2019~

Fin55M

Carbon fin for CO1x and CO2x, 205mm deep

Material: Carbon **Standard:** 11/2019~



Fin52a

Bungee for fix adjustment - 260mm long

Material: Rubber **Standard:** ~06/2017



Fin52b

Aluminium piece for fix fin bungee

Material: Aluminium **Standard:** ~06/2017



Fin54a

Fin box for Fin53, 49, 55 (include Hex socket screw ScrGrub5x16)

Material: Fiberglass **Standard:** 06/2017~



Fin56

Fin box filler

Material: Nylon **Standard:** 10/2020~

Fins, Rudders and associated parts - Gig rudders



G1

Rudder - with stainless attachments

Material: Wood **Standard:** yes



G2

Upper attachment fitting on rudder

Material: Stainless **Standard:** yes

**G3**

Lower attachment fitting on rudder

Material: Stainless **Standard:** yes

**G4**

Attachment fitting for rudder on boat

Material: Stainless **Standard:** yes

**G7**

Insert for top of rudder to take rudder rope (same as Fin25A)

Material: Nylon **Standard:** ~10/2009

**G8**

Eye for rudder rope

Prod No.: G8 **Material:** Nylon **Standard:** yes

**G9**

Pulley for rudder rope

Material: Aluminium **Standard:** yes

**G10**

Shackle for rudder

Material: Stainless **Standard:** 05/2010~

**G101**

Stern deck rudder wire guide

Material: Nylon **Standard:** 05/2010~

Discontinued parts for Fins & Rudders

:: Rudders

Fin1 was used on all boats built up to March 2009. Rudder yoke is above the canvas deck.

Fin1-200L / Large rudder for Freedom 2x / Stainless / ~03/2009

Fin1-240L / Large rudder for moulds #201(W&T),203(W&T),204(W&T) / Stainless/~03/2009

Fin1-255L / Large rudder for moulds #202(W&T),401(W&T) / Stainless / ~03/2009

Fin1-285L / Large rudder for moulds #402W,403W,802W / Stainless / ~03/2009

Fin1-305L / Large rudder for moulds #402T,403T,802T / Stainless / ~03/2009

Fin1-350L / Large rudder for moulds #801T / Stainless /~03/2009

Fin2 is used on boats from March 2009. Large rudders can be useful for river rowing.

Prod.# / Description / Material / Standard

Fin2-145S / Std rudder for freedom 2AR, AR202, PR202 / Stainless / ~10/2015

Fin2-155S / Std rudder for all 2s except 2AR, AR202, PR202 / Stainless / ~10/2015

Fin2-200S / Std rudder for all 4s, 802, 806, 807 / Stainless / ~10/2015

Fin2-230S / Std rudder for 803, 805 / Stainless / ~10/2015

Fin2-145L / Large rudder for freedom 2AR, AR202, PR202 / Stainless / ~10/2015

Fin2-155L / Large rudder for all 2s except 2AR, AR202, PR202 / Stainless / ~10/2015

Fin2-200L / Large rudder for all 4s, 802, 806, 807 / Stainless / ~10/2015

Fin2-230L / Large rudder for 803, 805 / Stainless / ~10/2015

Fin4-150 / Rudder yoke, 150mm long, for 2s and 4s / Aluminium / ~10/2015

Fin4-240 / Rudder yoke, 240mm long, for 8s / Aluminium / ~10/2015

:: Fins

Prod.# / Description / Material / Standard

Fin10A / Fin box for replaceable fin / Aluminium / ~09/2011

Fin10C / Fin box for replaceable fin / Fiberglass / ~06/2021

:: Others

Prod.# / Description / Material / Standard

Fin25 / Rudder lever for top cox boats (incl washers, bolts and nuts for attaching to boat) / Wood / ~03/2014

Fin26 / Guide for rudder wire - white (Incl. S/S locking nut and 2 washers) / Nylon / ~10/2015

:: Cox Parts

Prod.# / Description / Material / Standard

Fin29 / Headrest for top cox boats (Incl.2U brackets and screws) / Wood / yes

Fin31A / 545x383mm cushion for bow coxed 402,406 / Rubber / yes

Fin31B / 555x390mm cushion for bow coxed 403,407 / Rubber / yes

:: Coastal rudders

Prod.# / Description / Material / Standard

Fin41A / Rudder post for smart track rudder / Aluminium / ~10/2020

:: Coastal fins

Prod.# / Description / Material / Standard

Fin53S / Fin forCO1x,160mm deep / Fiberglass / ~11/2019

Fin53M / Fin forCO2x/-,205mm deep / Fiberglass /~11/2019

Other parts - Racing Shells & general use - Hatches and bungs

Prod.# refers to diameter of inside hole of the outer part. Oth2-155 was only used on a few 2006 4s and 8s. Oth2-65 was only used on some 1s in 2005 and 2006.



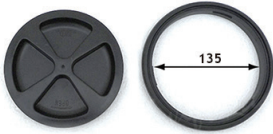
Oth2-115

Black hatch - 115mm

Material: Nylon **Standard:** 06/2008~

Oth2-115in: (inner part only)

Oth2-115: (inner and outer part)



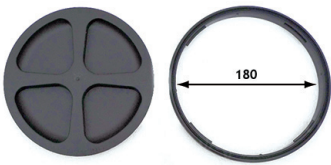
Oth2-135

Black hatch - 135mm

Material: Nylon **Standard:** yes

Oth2-135in: (inner part only)

Oth2-135: (inner and outer part)



Oth2-180

Black hatch - 180mm

Material: Nylon **Standard:** 08/2008~

Oth2-180in: (inner part only)

Oth2-180: (inner and outer part)



Oth2-180A

Black hatch (screw thread type for CO only) - 180mm

Material: Nylon **Standard:** 08/2018~

Oth2-180inA: (inner part only)

Oth2-180A: (inner and outer part)



Oth2A

White bung (inner and outer part)

Material: Nylon **Standard:** 08/2008~



Oth2B

White bung (inner part only)

Material: Nylon **Standard:** 08/2008~



Oth115

Hatch opener for Oth2-180A

Material: Nylon **Standard:** 06/2019~

Other parts - Racing Shells & general use - Other



Oth1A

Bow ball

Material: Rubber **Standard:** 09/2020~



Oth3

Number plate holder

Material: Nylon **Standard:** yes



Oth7a

Padding for cox seat and back (450 x 300mm and can be cut to fit) - black

Material: Rubber **Standard:** 09/2011~

Other parts - Racing Shells & general use - Weights



Oth6A

Weight

Material: Stainless **Standard:** no

Oth6A-200: 200g weight

Oth6A-400: 400g weight

Other parts - Racing Shells & general use - Stickers & decals

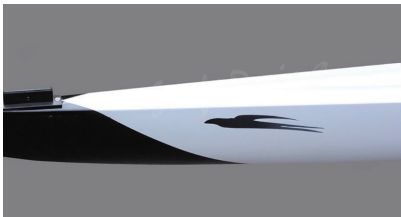


Oth20

Anti-slip tape from 3M (5x10cm)

Material: Nylon **Standard:** 07/2008~

Others



Oth22

Bird logo

Material: PVC

Oth22bb: black - bowside - 20cm long **Standard:** ~03/2011

Oth22bs: black - strokeside - 20cm long **Standard:** ~03/2011

Oth22wb: white - bowside - 20cm long **Standard:** 12/2014~

Oth22ws: white - strokeside - 20cm long **Standard:** 12/2014~

Oth22bb40: black - bowside - 40cm long for Gig and Coastal **Standard:** 01/2017~

Oth22bs40: black - strokeside - 40cm long for Gig and Coastal **Standard:** 01/2017~



Oth23

"Swift racing"

Material: PVC

Oth23b1: black - 16.5x3.8cm for 1s only **Standard:** 03/2011~

Oth23b2: black - 20.5x4.8cm for others **Standard:** 03/2011~

Oth23b3: black - 40cm long for Gig and Coastal **Standard:** 01/2017~

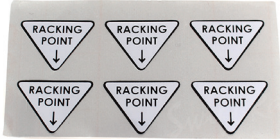
Oth23w1: white - 16.5x3.8cm for 1s only **Standard:** 03/2011~

Oth23w2: white - 20.5x4.8cm for others **Standard:** 03/2011~

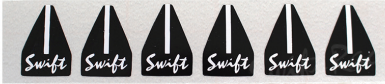
Oth23w3: white - 40cm long for Gig and Coastal **Standard:** 01/2017~



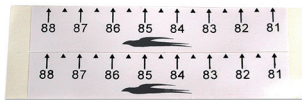
Oth24
FISA logo sticker
Material: PVC **Standard:** 09/2011~



Oth25
Rack point sticker
Material: PVC **Standard:** 05/2017~



Oth26
Line of work sticker
Material: PVC **Standard:** 05/2017~



Oth27 Span sticker
Material: PVC **Standard:** 03/2019~
Oth27sc: for scull rigger
Oth27sw: for sweep rigger



Oth28
Anti-slip tape from 3M
Material: Nylon **Standard:** 06/2020~
Oth28a: for RS, Cadet & Trainer saxlips - 3.2x28cm - black
Oth28b: for PR saxlips - 3.2x43cm - black
Oth28c: for CO saxlips - 3.2x31cm - black



Oth29
Anti-slip tape
Material: Nylon **Standard:** 06/2020~
Oth29a: from 3M for 750mm seat rails
Oth29b: from 3M for 820mm seat rails
Oth29c: from 3M for 850mm seat rails
Oth29d: from 3M for 880mm seat rails
Oth28c: for CO saxlips - 3.2x31cm - black

Other parts - Racing Shells & general use - Bungs for wiring



Oth11 For wiring
Material: Nylon **Standard:** 04/2016~
Oth11i: 25mm insert for wiring
Oth11b: 25mm bung for wiring

Other parts - Racing Shells & general use - Cross stays for 1s (ali pipe)

All measurements below are from hole to hole (of boat).



Oth31 Cross stay

Material: Aluminium **Standard:** yes

Oth31-10: for mould 101 (approximately 313mm)

Oth31-11: for mould 102 (approximately 320mm)

Oth31-12: for mould 103 (approximately 328mm)

Oth31-13: for mould 104 (approximately 343mm)

Oth31-15: for mould 105 (approximately 341mm)

Oth31-16: for mould 106 (approximately 366mm)

Oth31-17: for mould 107 (approximately 325mm)

Oth31-18: for mould 108 (approximately 343mm)

Oth31-19: for mould 109 (approximately 325mm)

Other parts - Racing Shells & general use - Floats



Flo01

Float (without fixing arm), incl. 6mm washers and locking nuts

Material: Fiberglass **Standard:** yes

Other parts - Racing Shells & general use - Floats (for Wing and Euro riggers)

FloAD for riggers with a Euro/Wing type rigger block, including PARA, and other makes of boats.



FloAD01a

Complete float (incl. FloAD02a, 03, Flo01, 02)

Material: Fiberglass **Standard:** yes



FloAD01b

Complete float (incl. FloAD02b, 03, Flo01, 02)

Material: Fiberglass **Standard:** yes



FloAD02a

Float fixing arm

Material: Stainless **Standard:** yes



FloAD02b

Float fixing arm (diagonal) for very narrow span riggers

Material: Stainless **Standard:** ~05/2015



FloAD03

Rigger attachment for FloAD01 (incl. 1 of ScrHex12x60, NutLock12 & 2 of WashPla 12, 1 of NutKnob8, WashSpr8 & WashPla8)

Material: Stainless **Standard:** 03/2011~

Other parts - Racing Shells & general use - Floats (for Reverse Wing riggers)

FloCA for Reverse Wing riggers, such as our Cadet boats.



FloCA01

Complete float (incl. FloCA02, 03, Flo01)

Material: Fiberglass **Standard:** no



FloCA02

Float fixing arm

Material: Fiberglass **Standard:** no



FloCA03

Rigger attachment for FloCA01 (incl. 2 of ScrHex6x20 & WashPla6, 1 of WashSpr6 & NutHex6, 1 of NutKnob8b, WashSpr8 & WashPla8)

Material: Stainless **Standard:** no

Other parts - Coastal other parts - CO bow rope



Oth102

Cleat

Material: Stainless **Standard:** ~04/2020



Oth103

Bow rope

Material: Nylon **Standard:** yes

Oth103:1m

Oth103-15:15m



Oth103a

Bag for bow rope

Material: Nylon **Standard:** yes



Oth103b

Black foam disk for bow rope bag

Material: Nylon **Standard:** yes



Oth103c

Plastic tubing for bow rope bag

Material: Nylon **Standard:** yes



Oth103-C

Complete bow rope and bag for CO1x & CO2x

Material: Nylon **Standard:** yes



Oth103-Ca

Complete bow rope and holder for CO402A+ & CO402B+
Material: Nylon **Standard:** yes



Oth103d

Velcro strap for bow rope holder Oth103-Ca, 50x250mm
Material: Nylon **Standard:** yes



Oth103e

3M Dual Lock for bow rope holder Oth103-Ca, 25x200mm
Material: Nylon **Standard:** yes

Other parts - Coastal other parts - CO drainage flaps



Oth113a

Drainage flap holder
Material: Nylon **Standard:** ~12/2017



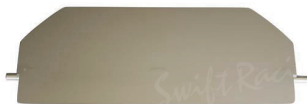
Oth113b

Drainage flap holder (black) - bowside
Material: Nylon **Standard:** 12/2017~



Oth114a

Drainage flap for CO102-
Material: Aluminium **Standard:** yes



Oth114b

Drainage flap for CO202-
Material: Aluminium **Standard:** yes



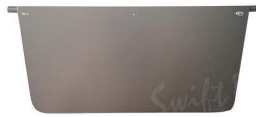
Oth114c

Drainage flap for CO402+
Material: Aluminium **Standard:** yes



Oth114d

Drainage flap for CO103-
Material: Aluminium **Standard:** yes



Oth114e
 Second drainage flap for CO402+
Material: Aluminium **Standard:** 09/2019~



Oth114f
 Drainage flap for CO202A-
Material: Aluminium **Standard:** yes



Oth114g
 Drainage flap for CO402A+
Material: Aluminium **Standard:** yes



Oth114h
 Drainage flap for CO402B+
Material: Aluminium **Standard:** yes



Oth123
 Holder for CO drainage flaps
Material: Nylon **Standard:** 12/2017~

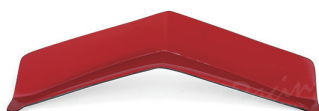


Oth116
 Bungee for CO drainage flaps, length is 350mm (same as Sea23-350)
Material: Rubber **Standard:** 09/2019~



Oth124
 "L" shape mount for drainage flaps for CO102- & CO103- complete, per pair
 (incl. 2 of Oth123, 4 of ScrC/S4x15 with washers & nuts)
Material: Carbon&FG **Standard:** 03/2022~

Other parts - Coastal other parts - CO wave breakers



Oth106
 Wave breaker
Material: Carbon **Standard:** yes
Oth106-1: for CO1x
Oth106-2: for CO2x/-
Oth106-3: for CO4x/+



Oth107
 Rubber washer for wave breaker - 5mm
Material: Rubber **Standard:** yes



Oth120

Wave breaker

Material: Carbon **Standard:** 10/2020~

Oth120-1a: CO102-, clear carbon

Oth120-1b: CO103-, clear carbon

Oth120-2a: CO2x, clear carbon

Oth120-4a: Co4x/+, clear

Oth120-4b: sliding type, for CO402A+, clear carbon

Oth120-4c: sliding type for CO402B+, clear carbon



Oth125

Screw for sliding type wave breaker

Material: Stainless **Standard:** yes



Oth126

Plastic washer for sliding type wave breaker

Material: Nylon **Standard:** yes

Other parts - Coastal other parts - CO cox seats



Oth108

Cox seat for CO4x/+

Material: FG&PVC **Standard:** yes



Oth118

Spacer for CO4x/+ cox seat (Oth108), with 2 of ScrPan6x25, washer & lock nut

Material: Aluminium **Standard:** 09/2019~

Other parts - Coastal other parts - Coastal nets



Oth112a

Net holder

Material: Nylon **Standard:** yes



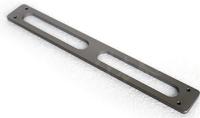
Oth112b

Net bungee (1m)

Material: Rubber **Standard:** yes



Oth109B
Stern net for life jacket
Material: Nylon **Standard:** 01/2022~



Oth111
Cross bar for life jacket
Material: Aluminium **Standard:** ~01/2017



Oth119
Bungee 6mm, for hold CO life jacket net (Oth109) – price per 1m (same as Fin46)
Material: Rubber **Standard:** 04/2017~

Other parts - Coastal other parts - Coastal other



Oth101-6

Oth101-8

Oth101
Eye for rope - U shaper
Material: Stainless **Standard:** ~01/2017
Oth101-6: 6mm
Oth101-8: 8mm



Oth104
Plastic cleat
Material: Nylon **Standard:** 06/2017~



Oth105
Carrying Handle for CO1x - complete
Material: Nylon **Standard:** 01/2018~



Oth117
Bow handle (CO4x+)
Material: Stainless **Standard:** 04/2020~



Oth121
25mm stern carrying bar
Material: Aluminiums
Oth121a: CO102- (incl. 2 of Oth122) **Standard:** 12/2021~
Oth121b: CO103- (incl. 2 of Oth122) **Standard:** 12/2021~
Oth121c: CO202A- (incl. 2 of Oth122) **Standard:** 08/2020~
Oth121d: CO402A+ & CO402B+ (incl. 2 of Oth122) **Standard:** 01/2022~



Oth122
Plastic insert for CO stern carry bar (Oth121)
Material: Nylon **Standard:** 09/2020~



Oth127a: Stern cover for CO102-
Oth127b: Stern cover for CO103-
Oth127c: Stern cover for CO202A-
Oth127d: Stern cover for CO402A+ & CO402
Material: Carbon&PVC **Standard:** No

Other parts - Gig other parts - Gig cox seats



G22a

Cox seat (3rd generation - moulded FG&PVC with ali frame)
Material: Fiberglass **Standard:** ~11/2019



G22b

Cox seat (4th generation) (same as Oth108)
Material: FG&PVC **Standard:** 12/2019~



G44

Rope for rudder (4mm diameter)
Material: Nylon **Standard:** yes



G6

Wooden "toggle" with 6mm hole for gig boat rudder rope
Material: Wood **Standard:** 10/2008~

Other parts - Gig other parts - Gig other



G41

Bow ball
Material: Wood **Standard:** ~02/2018
G41-2: Bow ball for gigs 2+
G41-4: Bow ball for gigs 4+



G50A

Bow ball for gigs
Material: Rubber **Standard:** 02/2018~



G43

Carrying bar

Material: Aluminium **Standard:** yes

G43a: 77cm, used on gig2 in bow position

G43b: 72.5cm, used on gig2 in cox position, and on gig4



G45

Eye for rope

Material: Stainless **Standard:** yes

G45b: Eye for bow rope (V shape)

G45s: Eye for stern rope (flat shape)



G48

Rope for, bow and stern (8mm diameter, 7m long)

Material: Nylon **Standard:** yes



G49

Wave break for 2+ and 4+

Material: Carbon **Standard:** no

Other parts - Gig other parts - Gig extra sculling seat deck

Swift gigs are made so that the cox position can be changed to a sculling position. If you have a Swift gig, but did not order it with the parts for this, you will need the parts below, plus seat rails, seat rail wedges, a seat, riggers and stretcher parts.



G60

extra sculling seat deck, with 4 bolts (Excl. seat rails or seat)

Material: Fiberglass **Standard:** yes



G61

Inserts in extra sculling seat deck (same as Rig12)

Material: Stainless **Standard:** yes



G62

Insert in boats, to receive extra sculling seat

Material: Stainless **Standard:** yes

Other parts - Gig other parts - Gig keel strips



G70-77

Keel strips

Material: Stainless **Standard:** yes

G70: main - for all gigs (18mm wide x 2m long)

G71: bow - for gig4+, Cgig4+ (9-18mm wide x 1.1m long)

G72: stern - for gig4+, Cgig4+ (18-14mm wide x 2m long)

G73: bow - for gig2+long (10-18mm wide x 1.2m long)

G74: stern - for gig2+long (14-18mm wide x 2m long)

G75: bow - for gig2+short (9-15mm wide x 0.88m long)

G76: 2nd from bow - for gig2+short (16-18mm wide x 1.67m long)

G77: stern - for gig2+short (14-18mm wide x 2m long)

Other parts - Gig other parts - Gig hatches

Please note that the hatches used on gig seat decks are **Standard** parts, and are shown on p36 "OTHER PARTS - Hatches and bungs" page.



G90

Round hatch

G90c: cover 20 **Material:** Rubber **Standard:** yes

G90r: rim 20 **Material:** Nylon **Standard:** yes



G91

Oval hatch

G91c: cover 42/30 **Material:** Rubber **Standard:** yes

G91r: rim 42/30 **Material:** Nylon **Standard:** yes

Discontinued parts for Others

:: Hatches and bungs

Oth2-65 was only used on some 1s in 2005 and 2006.

Prod.# / Description / Material / Standard

Oth2-65in / Black hatch - 65mm (inner part only) / Nylon / ~01/2006
Oth2-65 / Black hatch - 65mm (inner and outer part) / Nylon / ~01/2006
Oth2-100in / Black hatch-100mm(innerpartonly) / Nylon / ~06/2008
Oth2-100 / Black hatch-100mm(inner and outer part) / Nylon / ~06/2008

:: Stickers & decals

Prod.# / Description / Material / Standard

Oth21b / "Swift racing" - black - 30cm long / PVC / ~03/2011
Oth21w / "Swift racing" - white - 30cm long / PVC / ~03/2011

:: Coastal aluminium riggers

Prod.# / Description / Material / Standard

Oth1 / Bow ball / Rubber / ~09/2020

:: Bungs for wiring

Prod.# / Description / Material / Standard

OthCMi / 25mm insert - made by Coxmate / Nylon / ~04/2016
OthCMb / 25mm bung - made by Coxmate / Rubber / ~04/2016

:: Coastal other parts - CO drainage flaps

Prod.# / Description / Material / Standard

Olh113b / Drainage flap holder(black)/Nylon/~12/2017

:: Coastal other parts - CO wave breakers

Prod.# / Description / Material / Standard

Oth106-1 / Wave breaker for CO1X / Carbon / yes
Oth106-3 / Wave breaker for CO4X+ / Carbon / yes

:: Coastal other parts - Coastal nets

Prod.# / Description / Material / Standard

Oth109 / Stern net for life jacket / Rubber / ~01/2022

Adaptive parts - Seats



ADSea26

Flat carbon seat (incl 4 of Tbolt8x25, nuts, washers)

Material: Carbon **Standard:** 03/2010~



ADSea31

Racing kayak seat for 2x (incl 4 of Tbolt8x30, nuts, washers)

Material: Fiberglass **Standard:** 03/2010~



ADSea32s

Bucket seat for 2x - small (incl 4 of Tbolt8x30, nuts, washers)

Material: Fiberglass **Standard:** 03/2010~



ADSea32l

Bucket seat for 2x - large (incl 4 of Tbolt8x30, nuts, washers)

Material: Fiberglass **Standard:** 03/2010~

Adaptive parts - Back supports

The back support is independent of the seat, and is fixed to the seat rail with 4 T bolts (included). There is a lot of possible adjustment of back angle.



ADSea47

Round end cap for all pipe - white (for ADSea41a, ADBack) same as ADSea22

Material: Nylon **Standard:** 03/2010~



ADBack-51

Back cushion Mark 3

Material: Nylon **Standard:** 12/2013~

ADBack-51-220: 220mm

ADBack-51-260: 260mm

ADBack-51-340: 340mm

ADBack-51-380: 380mm



ADBack-52

Replacement foam for ADBack-51

Material: Rubber **Standard:** 12/2013~

ADBack-52-220: 220

ADBack-52-260: 260

ADBack-52-340: 340

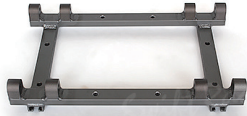
ADBack-52-380: 380

**ADBack-53L**

Long brace(inner pipe) - 350mm

Material: Aluminium **Standard:** 12/2013~**ADBack-53S**

Short brace(inner pipe and outer pipe) - 180mm

Material: Aluminium **Standard:** 12/2013~**ADBack-54**

Base for back support Mark 3

Material: Aluminium **Standard:** 12/2013~**ADBack-55**

Hose Clip (Same as Rig42)

Material: Stainless **Standard:** 12/2013~**ADBack-c**

Complete back support Mark 3

Material: Aluminium **Standard:** 12/2013~**ADBack-220c:** 220mm wide**ADBack-260c:** 260mm wide**ADBack-340c:** 340mm wide**ADBack-380c:** 380mm wide**ADBack4-56c**

Seat Mark 4 - carbon piece and ali base only - 360x400mm

Material: Carbon **Standard:** no**ADBack4-56**

Seat Mark 4 - carbon piece only - 360x400mm

Material: Carbon **Standard:** no**ADBack4-57**

Ali base for Mark 4 carbon seat and back support

Material: Aluminium **Standard:** no**ADBack4-58b**

Upright - bow side

Material: Aluminium **Standard:** no**ADBack4-58s**

Upright - stroke side

Material: Aluminium **Standard:** no



ADBack4-59

Brace, complete - with screws

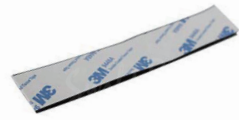
Material: Aluminium **Standard:** no



ADBack4-62

Back support foam for ADBack4-60, 155x380mm

Material: Rubber **Standard:** no



ADBack4-63

Velcro with double sides tape for ADBack4-62, 25x140mm

Material: Nylon **Standard:** no



ADBack4-60

Back plate

Material: Carbon **Standard:** no

ADBack4-60-230: 230mm wide

ADBack4-60-280: 280mm wide

Back4-60-330: 330mm wide

ADBack4-60-380: 380mm wide



ADBack4

Seat & back support Mark 4, complete

(incl. 2 of ADBack-62, 6 of ADBack4-63, 1 of ADBack-61)

Material: Aluminium **Standard:** no

ADBack4-230c: 230mm wide back plates

ADBack4-280c: 280mm wide back plates

ADBack4-330c: 330mm wide back plates

ADBack4-380c: 380mm wide back plates

Adaptive parts - Straps



ADSea7e

Leg strap - 2 piece type (Incl. 2 of Tbolt8x25, nuts, washers) - 2011 FISAApproved

Material: Nylon **Standard:** 05/2011~



ADSea7f

Chest strap - 2 piece type (Incl. 4 of ScrHex6x20, nuts, washers) - 2011 FISA approved

Material: Nylon **Standard:** ~12/2013



ADBack-61

Chest strap Mark 3

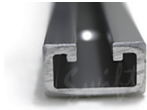
Material: Nylon **Standard:** 12/2013~

ADBack-61: for ADBack4 - 110mm wide (Incl. 4 of ScrHex6x35, nuts, washers)

ADBack4-61: for ADBack4 - 110mm wide (Incl. 4 of ScrHex6x25, nuts, washers)

Adaptive parts - Seat deck parts

ADSea9a, 9c used the same shape C rail, and "Tbolt8x25". From March 2011 we use a deeper and stronger C rail, ADSea9d, and "Tbolt8x35". This has the same 7 holes as ADSea9a.



ADSea9d

"C" seat rail only (7 bolt type) - new type, incl. 1 of ADSea13

Material: Aluminium **Standard:** 03/2011~



ADSea13

Black end cap for ADSea9d

Material: Nylon **Standard:** 06/2010~



ADSea51

Insert in seat deck for rail bolt hole (5mm)

Material: Nylon **Standard:** yes



ADSea15

25mmx25mmx10mm spacer, to raise adaptive seat or back support

Material: Nylon **Standard:** no

Adaptive parts - Concept II rowing machine parts

Our seats and back supports can be fitted to CII rowing machines. Use the T bolts, nuts and washers that are supplied with the seats and back supports, plus 4 pieces of our "adapter" (ADSea16), to attach securely to the top "lip" of the seat rail. For the soft seat, please order also 1 of ADSea17.



ADSea16

"Tabs" to attach seats and backs to CII machines

Material: Aluminium **Standard:** 03/2011~



ADSea17

Reinforcement for soft seat (ADSea21) on CII machine
(2 pieces, 4 of Tbolt8x30, wing nuts and washers)

Material: Aluminium **Standard:** 03/2011~



ADSea18

Set of 4 "tabs" with 8x45mm hex screws, hex nuts, washers to attach seats & backs to CII machines

Material: Aluminium **Standard:** 03/2011~

Discontinued parts for Adaptive parts

:: Seats

Prod.# / Description / Material / Standard

ADSea21 / Complete soft seat (incl ADsea21a,21b,21c,4 of 22,4 of Tbolt8x30, nuts, washers) / Aluminium / 03/2010~
ADSea21a / Frame for ADSea21 / Aluminium / 03/2010~
ADSea21b / Cushion for ADSea21 / Nylon / yes
ADSea21c / Padding for under ADSea21 (White foam 34.5x37x2cm) / EPE / 03/2010~
ADSea22 / Round end cap for ali pipe - white (for ADSea21a) Same as ADSea47 / Nylon / 03/2010~

:: Back supports

Except for the different uprights (ADSea41a & 42a), ADSea41 & 42 have the same parts (2 of 43-41, 2 of 43-25, 2 of 45-35, 2 of 45-40, 4 of 14-25, 1 of 44, 1 of 46).

Prod.# / Description / Material / Standard

ADSea41 / Complete back support - wide type / Aluminium / ~12/2013
ADSea41a / Upright frame for back support - wide type (incl. 2 of 47) / Aluminium / ~12/2013
ADSea42 / Complete back support - narrow type / Aluminium / ~12/2013
ADSea42a / Upright frame for back support - narrow type (incl. 2 of 47) / Aluminium / ~12/2013
ADSea43-41 / Long brace - 41cm / Aluminium / ~12/2013
ADSea43-25 / Short brace - 25cm / Aluminium / ~12/2013
ADSea44 / Base for back support (for ADSea41 & 42) / Aluminium / ~12/2013
ADSea46 / Back cushion (new long type for ADSea41 & 42) / Nylon / ~12/2013

:: Straps

Prod.# / Description / Material / Standard

ADSea7c / 1 piece velcro strap - short - for lap / Nylon / ~05/2011
ADSea7d / 1 piece velcro strap - long - for chest / Nylon / ~05/2011

:: Seat deck parts

Prod.# / Description / Material / Standard

ADSea9a / "C" seat rail only (7 bolt type) / Aluminium / ~03/2011
ADSea9c / "C" seat rail only - no holes (for boats before June 2010) / Aluminium / ~06/2010
ADSea10 / Seat rail spacer for ADSea9d - 2mm, white / Nylon / 03/2011~

Nuts, bolts, washers: Coach/carriage bolts

Coach6

Coach bolt

Coach6x20: 6x20mm coach bolt with 8mm sleeve - (attach steering finger Str46B) **Material:** SS304 **Standard:** 09/2011~

Coach6x25: 6x25mm coach bolt (attach steering finger Str46E, Str46F) **Material:** SS304 **Standard:** 09/2012~

Coach6x30: 6x30mm coach bolt - (attach wing riggers from May 2012~Feb 2013) (attach mould 121- stretcher pipe Str105 to saxboard)
Material: SS304 **Standard:** ~02/2013

Coach6x35: 6x35mm - (attach upright of PARA back support to base ADSea44, brace to upright of PARA back support)
Material: SS316 **Standard:** yes

Coach6x40: 6x40mm - (attach stretcher base to 16mm pipe, brace to base of PARA back support ADSea44, braces and back support lower to the base of PARA adjustable back support, attach wing riggers from Feb 2013)
Material: SS316 **Standard:** yes

Coach6x45: 6x45mm - (for 2s, 4s, 8s with wing riggers before May 2012) **Material:** SS304 **Standard:** ~05/2012

Coach6x50: 6x50mm - **Material:** SS304 **Standard:** no

Coach6x60: 6x60mm - **Material:** SS304 **Standard:** no

Coach6x70: 6x70mm - **Material:** SS304 **Standard:** no

Coach6x80: 6x80mm - **Standard:** no



Rigger bolts have square "necks" which fit the square hole in the rigger bolt washers. Because the inside and outside surfaces of ribs (shoulders) are not parallel, the head of the bolt needs to be bent, relative to the shaft. The rigger bolts below (pb) have already have the head bent at the factory.

Coach-pb

Coach bolt (pre bent rigger bolt)

Material: SS304

Coach6x35pb: 6x35mm **Standard:** yes

Coach6x40pb: 6x40mm **Material:** SS316 **Standard:** yes

Coach6x45pb: 6x45mm **Material:** SS316 **Standard:** yes

Coach6x50pb: 6x50mm **Standard:** no

Coach6x60pb: 6x60mm **Standard:** no

Coach6x70pb: 6x70mm **Standard:** no

Coach6x80pb: 6x80mm **Standard:** no



Nuts, bolts, washers: T bolts

T bolt

Tbolt5x25: 5x25mm (attach seat rail to all sloping seat decks) **Material:** SS316 **Standard:** yes

Tbolt5x35: 5x35mm (attach front of seat rail to all non-sloping seat decks) **Material:** SS316 **Standard:** yes

Tbolt5x45: 5x45mm (attach back of seat rail to all non-sloping seat decks) **Material:** SS316 **Standard:** yes

Tbolt6x30: 6x30mm (attach stretcher pipe to stretcher track) **Material:** SS316 **Standard:** yes

Tbolt6x45: 6x45mm (attach base of stretcher to stretcher track) **Material:** SS304 **Standard:** yes

Tbolt8x25: 8x25mm (attach seats and back supports to old adaptive rail ADSea9a) **Material:** SS304 **Standard:** ~03/2011

Tbolt8x30: 8x30mm T bolt (attach seats and back supports Mark 3 to adaptive rail ADSea9d) **Material:** SS304 **Standard:** 03/2011~

Tbolt8x40: 8x40mm (attach seats and back supports to adaptive rail ADSea9d) **Material:** SS304 **Standard:** no



Nuts, bolts, washers: Screws-hexagonal head

ScrHex

Hex screw

Material: SS316

- ScrHex6x20:** 6x20mm (attach C bracket Rig9B to Ali Back Rigger, extra scull seat to gigs G60) **Standard:** yes
- ScrHex6x25:** 6x25mm hex screw (attach braces to Mark3 PARA back support upper)(attach SmartTrack rudder to CO rudder post Fin41B) (attach ADBack4-59 to ADBack4-58, attach ADBack4-61 to ADBack4-58) **Standard:** yes
- ScrHex6x30:** 6x30mm (attach wing rigger topstays to boat) **Standard:** yes
- ScrHex6x35:** 6x35mm hex screw (attach CO folding rigger to saxlip) (attach ADBack4-58 to ADBack4-57) **Standard:** 11/2017~
- ScrHex6x40:** 6x40mm hex screw (attach PARA chest straps to adjustable back support) (attach ADBack-53 to ADBack-54) (Mark3 PARA back support bottom part to ADBack-54) **Standard:** yes
- ScrHex8x20:** 8x20mm (for all back rigger pins Rig3AL) **Standard:** yes
- ScrHex8x25:** 8x25mm (for rigger pins Rig2) **Standard:** 09/2008~
- ScrHex8x30:** 8x30mm 8x30mm hex screw (used on top of ali back rigger pins Rig3AL) **Standard:** 10/2019~
- ScrHex8x45:** 8x45mm (for sections of 4s and 8s) **Standard:** yes
- ScrHex8x55:** 8x55mm (for sections of 4s and 8s) **Standard:** yes
- ScrHex12x60:** 12x60mm (attach adaptive float to rigger with FloAD03) **Standard:** yes



Nuts, bolts, washers: Screws-countersunk head

ScrC/S

C/S screw, posi +

Material: SS304 **Standard:** yes

- ScrC/S4x12:** 4x12mm C/S screw, posi + (for fin box Fin10A) (attach stretcher track for 1s, cable guide holder to shoe plate Str44A) (attach flexfoot Str70B) **Standard:** ~08/2011
- ScrC/S4x15:** 4x15mm C/S screw, posi + (attach gig guide for steering finger G17 to stretcher) (attach CO102 & 103 CO flap holder Oth123 to Oth124)
- ScrC/S4x20:** 4x20mm C/S screw, posi + (for U bracket Str6, attach cam Rig82-QR to square shaft for Quick Release Rig84-QR) (attach flexfoot Str70B) (attach stretcher to mould 121- stretcher pipe Str105)
- ScrC/S4x20:** 4x25mm C/S screw, posi + (attach flexfoot Str70B)
- ScrC/S4x35:** 4x35mm C/S screw, posi + (attach gig steering footboard to stretcher G12s, attach plastic cleat Oth104)
- ScrC/S5x10:** 5x10mm C/S screw, posi + (attach shoe to shoe plate)
- ScrC/S5x25:** 5x25mm C/S screw, posi + (for steering finger clamp Str47)
- ScrC/S5x30:** 5x30mm C/S screw, posi + (for steering finger clamp Str47, adaptive seat rail)
- ScrC/S5x35:** 5x35mm C/S screw, posi + (for steering finger clamp Str47) (attach ADBack4-56 to ADBack4-57)
- ScrC/S6x20:** 6x20mm C/S screw, posi + (attach SmartTrack rudder post to CO stern)
- ScrC/S6x25:** 6x25mm C/S screw, posi + (attach shoe plate to stretcher) (attach stainless cleat Oth102 to the bow of CO2x/- & 4x+) (attach ADBack4-60 to ADBack4-58)
- ScrC/S6x30:** 6x30mm C/S screw, posi + (attach carrying handle Oth105 to CO1x)
- ScrC/S6x35:** 6x35mm C/S screw, posi + (attach QR base Rig81-QR to sax lip, attach the rigger holder to coastal boat)



Nuts, bolts, washers: Screws-pan head

ScrPan

pan screw, posi +

Material: SS304 **Standard:** yes

- ScrPan4x20:** 4x20mm pan screw, posi + (attach flexfoot to stretcher Str70B)
- ScrPan4x25:** 4x25mm pan screw, posi + (for bow ball for all except Freedom 1s and 2s)
- ScrPan4x30:** 4x30mm pan screw, posi + (for bow ball for Freedom 1s and 2s)
- ScrPan5x25:** 5x25mm pan screw, posi + (attach CO extra wave breaker to saxlip)
- ScrPan5x30:** 5x30mm pan screw, posi + (attach CO wave breaker to canvas deck)
- ScrPan6x20:** 6x20mm pan screw, posi + (for seat wheel Sea12)
- ScrPan6x25:** 6x25mm pan screw, posi + (attach CO cox seat to ali spacer Oth118)
- ScrPan6x30:** 6x30mm pan screw, posi + (attach CO4x/+ connect piece to rudder yoke & rudder lever) (attach CO ali carrying bar to stern)
- ScrPan6x45:** 6x45mm pan screw, posi + (for attach rudder wire to rudder lever Fin25B)
- ScrPan6x60:** 6x60mm pan screw, posi + (for attach rudder lever to bow canvas Fin25B)



Nuts, bolts, washers: Washer/plain

WashPla

Plain washer

Material: SS304/SS316 **Standard:** yes

- WashPla4:** 4mm plain washer - 9mm wide (attach cable guide holder to shoe plate Str44A, flexfoot to stretcher Str70B) (for U bracket Str6, bow ball Oth1) etc
- WashPla5:** 5mm plain washer - 10mm wide (for seat rail, steering finger clamp Str47, rudder Fin1, Fin2)(for CO wave break)
- WashPla5W:** Wide 5mm plain washer - 15mm wide (for eye of rope G45b & G45s)
- WashPla6:** 6mm plain washer - 11 wide (attach shoe plate to stretcher, stretcher base to 16mm pipe, steering finger Str46B, C bracket Rig9 to Ali Back Rigger) (for seat wheel, stretcher T bolt, rigger bolts) etc
- WashPla6W:** Wide 6mm plain washer - 18 mm wide (for wing rigger backstay) **Standard:** 03/2014~
- WashPla6T:** Wide 6mm plain washer (thick) - 10mm wide (for adaptive chest strap)
- WashPla8:** 8mm plain washer - 15mm wide (for rigger pins Rig 1 & Rig2 & Rig3A)
- WashPla8W:** Wide 8mm plain washer - 23mm wide (for adaptive leg strap)
- WashPla12:** 12mm plain washer - 26mm wide (for rigger pins Rig2) (attach adaptive float to rigger with FloAD03)



Nuts, bolts, washers: Washers with rubber - plain

WashPlaRub5W

5mm spring washer - (for rudder Fin1, Fin2)(for CO wave breaker)

Material: SS304/SS316 **Standard:** yes



Nuts, bolts, washers: Washer/spring

WashSpr

Spring washer

Material: SS304/SS316 **Standard:** yes

- WashSpr5:** 5mm spring washer - (for rudder Fin1, Fin2) (for CO wave break)
- WashSpr6:** 6mm spring washer - (for seat wheel, stretcher T bolt) (attach shoe plate to stretcher, stretcher base to 16mm pipe, C bracket Rig9 to Ali Back Rigger) (attach wing rigger to saxlip)
- WashSpr8:** 8mm spring washer - (for new rigger pins Rig2) (for section bolts)
- WashSpr12:** 12mm spring washer - (for rigger pins Rig2)



Nuts, bolts, washers: Wing nuts

Wing

Wing nut

Material: SS304 **Standard:** yes

- Wing5:** 5mm wing nut (steering finger clamp Str47, rudder Fin1, Fin2)(for CO wave break)
- Wing5nyB:** 5mm nylon wing nut (for seat rail Sea14) **Material:** Nylon **Standard:** 12/2021~
- Wing6:** 6mm wing nut (attach shoe plate to stretcher for 1s)
- Wing8:** 8mm wing nut - was used on adaptive boats until Mar 2011



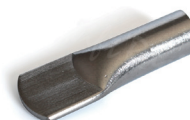
Nuts, bolts, washers: Tube nuts

NutTube

Tube nuts

Material: SS304 **Standard:** yes

- NutTube6x40:** Short tube nut (attach stretcher pipe to stretcher tracks excepts 1s & CO) (for attach shoe plate to stretcher) (attach stretcher keel bracket to keel track except CO)



Nuts, bolts, washers: Locking nuts

NutLock

Locking nuts

Material: SS304 **Standard:** yes

NutLock4: 4mm locking nut (attach cable guide holder Str44A to shoe plate, flexfoot Str70B) (for stretcher track Str8, U bracket Str6, bow ball Oth1)

NutLock5: 5mm locking nut

NutLock6: 6mm locking nut (attach stretcher base to 16mm pipe, steering finger Str46B to stretcher) (for rigger bolts)

NutLock8: 8mm locking nut

NutLock12: 12mm locking nut (attach adaptive float to rigger with FloAD03)



Nuts, bolts, washers: Hexagon nut

NutHex

Hexagon nut

Material: SS316 **Standard:** yes

NutHex5: 5mm hex nut

NutHex6: 6mm hex nut (attach wing rigger to saxlip)

NutHex8: 8mm hex nut (for section bolts, rigger pins Rig1)

NutHex12: 12mm hex nut (for rigger pins Rig2)



Nuts, bolts, washers: Knob nut

NutKnob

Knob nut

Material: SS316 **Standard:** yes

NutKnob6: 6mm knob nut - nylon surround (for stretcher pipe for 1s, Gig cox seat, CO cox seat) (for CO stretcher T bolt excepts)

NutKnob8: 8mm knob nut - nylon surround (attach adaptive float to stern wing rigger with FloAD03)

NutKnob8b: 8mm knob nut - nylon surround (attach adaptive float to reverse wing rigger with FloCA03)



NutKnob6



NutKnob8



NutKnob8b

Nuts, bolts, washers: Self tapping screws - pan head

TapPan3x8

3x8mm pan, self tapping screw, posi + (attach Str5 to base of stretcher before Sep 2011)

Material: SS304 **Standard:** ~09/2011



Nuts, bolts, washers: elf tapping screws - countersunk head

TapC

Countersunk head screw

Material: SS304 **Standard:** yes

TapC/S3x7: 3x7mm C/S, self tapping screw, posi + (attach Str5 to base of stretcher from Sep 2011) (attach Str107 to mould 121 - saxboard) **Standard:** ~09/2015

TapC/S3x12: 3x12mm C/S, self tapping screw, posi + (for double action seat SeaD5)

TapC/S4x10: 4x10mm C/S, self tapping screw, posi +

TapC/S4x13: 4x13mm C/S, self tapping screw, posi + (for seat support Sea11B with no spacer) (for Oth2A) (for seat rail stopper Sea14A)

TapC/S4x16: 4x16mm C/S, self tapping screw, posi + (for stretcher track Str8&9 on new seat decks) (for number plate holder Oth3) (for Fin23)(aluminium piece for fix Coastal boat fin bungeeFin52b) (Coastal boat elastic net Oth109)

TapC/S4x20: 4x20mm C/S, self tapping screw, posi + (for Coastal boat white holder for Flap Oth113a)

TapC/S4x22: 4x22mm C/S, self tapping screw, posi + (for seat support Sea11B with 1 spacer)

TapC/S4x25: 4x25mm C/S, self tapping screw, posi + (for black rail stopper Sea14A)

TapC/S4x32: 4x32mm C/S, self tapping screw, posi + (for seat support Sea11B with 2 spacers)



ScrGrub

grub screw

Material: Stainless

ScrGrub5x16: 5x16mm grub screw - use 2.5mm allen key (for CO fin box Fin54a) **Standard:** 06/2017~

ScrGrub6x16: 6x16mm grub screw - use 3mm allen key) (for repair CO fin box Fin54a) **Standard:** No



These help to prevent damage to boats, especially from hitting the pin against another boat. The nuts have a thread, and the caps can simply be pushed on to nuts or bolt heads.

Dome

Dome nut

Material: Nylon

Standard: no

Dome6: 6mm white

Dome6-100: 6mm white - pack of 100

Dome6-500: 6mm white - pack of 500

Standard: no

Dome8: 8mm white

Dome8-100: 8mm white - pack of 100

Dome8-500: 8mm white - pack of 500

Standard: yes

Dome10: 10mm - white

Dome10-100: 10mm - white - pack of 100

Dome10-500: 10mm - white - pack of 500

Standard: yes

Dome12: 12mm - white

Dome12-100: 12mm - white - pack of 100

Dome12-500: 12mm - white - pack of 500



NutCap

Nut protection cap

Material: Nylon

Standard: 10/2008~

NutCap8: 8mm black

NutCap8-100: 8mm black - pack of 100

NutCap8-500: 8mm black - pack of 500

Standard: no

NutCap10: 10mm black

NutCap10-100: 10mm black - pack of 100

NutCap10-500: 10mm black - pack of 500

Standard: 10/2008~

NutCap12: 12mm black

NutCap12-100: 12mm black - pack of 100

NutCap12-500: 12mm black - pack of 500



Discontinued parts for Nuts, bolts, washers

:: Coach/carriage bolts

Prod.# / Description / Material / Standard

Coach6x17 / 6x17mm coach bolt - (attach steering finger to stretcher Str46B) / SS304 / ~09/2011

Coach8x25 / 8x25mm coach bolt (attach seats and back supports to PARA seat rails) / SS304 / no

Coach8x35 / 8x35mm coach bolt (attach seats and back supports to PARA seat rails with 1 spacer ADSea15) / SS304 / no

Coach8x45 / 8x45mm coach bolt (attach seats and back supports to PARA seat rails with 2 spacers ADSea15) / SS304 / no

:: T bolts

Prod.# / Description / Material / Standard

Tbolt5x45ny / 5x45mm nylon T bolt (attach seat rail to all seat decks) / nylon / no

Tbolt6x40ny / 6x40mm nylon T bolt (attach seat rail to all seat decks) / nylon / no

Tbolt6x45ny / 6x45mm nylon T bolt (attach seat rail to all seat decks) / nylon / no

Tbolt8x40 / 8x40mm Tbolt(attach seats and back supports to adaptive rail ADSea9d) / SS304 / ~10/2019

:: Wing nuts

Prod.# / Description / Material / Standard

Wing5ny / 5mm nylon wing nut (attach seat rail to all seat decks) / nylon / no

Wing6ny / 6mm nylon wing nut (attach seat rail to all seat decks) / nylon / no

:: Tube nuts

Prod.# / Description / Material / Standard

NutTube6x60 / Long tube nut (for stretcher T bolt excepts 1s) / SS304 / ~09/2015